

Product datasheet for **TA335402**

SMARCA1 Rabbit Polyclonal Antibody

Product data:

Product Type:	Primary Antibodies
Applications:	WB
Recommended Dilution:	WB
Reactivity:	Human
Host:	Rabbit
Isotype:	IgG
Clonality:	Polyclonal
Immunogen:	The immunogen for Anti-SMARCA1 Antibody: synthetic peptide directed towards the N terminal of human SMARCA1. Synthetic peptide located within the following region: QEEGAAAAATEATAATEKGEKKKEKNVSSFQLKLAAPKSEKEMDPEYE
Formulation:	Liquid. Purified antibody supplied in 1x PBS buffer with 0.09% (w/v) sodium azide and 2% sucrose. <i>Note that this product is shipped as lyophilized powder to China customers.</i>
Purification:	Affinity Purified
Conjugation:	Unconjugated
Storage:	Store at -20°C as received.
Stability:	Stable for 12 months from date of receipt.
Predicted Protein Size:	120 kDa
Gene Name:	SWI/SNF related, matrix associated, actin dependent regulator of chromatin, subfamily a, member 1
Database Link:	NP_620604 Entrez Gene 6594 Human P28370



[View online »](#)

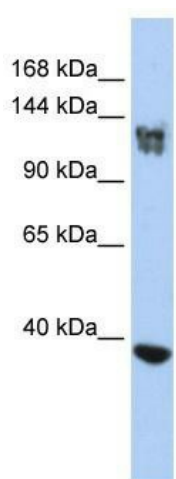
Background: SMARCA1 is a member of the SWI/SNF family of proteins. Members of this family have helicase and ATPase activities and are thought to regulate transcription of certain genes by altering the chromatin structure around those genes. This gene encodes a member of the SWI/SNF family of proteins. Members of this family have helicase and ATPase activities and are thought to regulate transcription of certain genes by altering the chromatin structure around those genes. Alternatively spliced transcript variants encoding different isoforms have been found for this gene.

Synonyms: ISWI; NURF140; SNF2L; SNF2L1; SNF2LB; SNF2LT; SWI; SWI2

Note: Immunogen Sequence Homology: Human: 100%; Dog: 93%; Pig: 93%; Horse: 93%; Bovine: 93%; Rabbit: 93%; Rat: 86%; Mouse: 85%

Protein Families: Transcription Factors

Product images:



WB Suggested Anti-SMARCA1 Antibody Titration:
0.2-1 ug/ml; ELISA Titer: 1:312500; Positive
Control: Jurkat cell lysate