

Product datasheet for **TA335401**

HLTF Rabbit Polyclonal Antibody

Product data:

Product Type:	Primary Antibodies
Applications:	WB
Recommended Dilution:	WB
Reactivity:	Human
Host:	Rabbit
Isotype:	IgG
Clonality:	Polyclonal
Immunogen:	The immunogen for Anti-SMARCA3 Antibody: synthetic peptide directed towards the N terminal of human SMARCA3. Synthetic peptide located within the following region: DPVWKYLQTVQYGVHGNFPRLSYPTFFPRFEFQDVIPPDDFLTSDEEVDS
Formulation:	Liquid. Purified antibody supplied in 1x PBS buffer with 0.09% (w/v) sodium azide and 2% sucrose. <i>Note that this product is shipped as lyophilized powder to China customers.</i>
Purification:	Protein A purified
Conjugation:	Unconjugated
Storage:	Store at -20°C as received.
Stability:	Stable for 12 months from date of receipt.
Predicted Protein Size:	114 kDa
Gene Name:	helicase-like transcription factor
Database Link:	NP_620636 Entrez Gene 6596 Human Q14527



[View online »](#)

Background:

SMARCA3 (HLTF) is a member of the SWI/SNF family. Members of this family have helicase and ATPase activities and are thought to regulate transcription of certain genes by altering the chromatin structure around those genes. SMARCA3 contains a RING finger DNA binding motif. Western blots using two different antibodies against two unique regions of this protein target confirm the same apparent molecular weight in our tests. The protein encoded by this gene is a member of the SWI/SNF family of proteins. Members of this family have helicase and ATPase activities and are thought to regulate transcription of certain genes by altering the chromatin structure around those genes. The encoded protein contains a RING finger DNA binding motif. Two transcript variants encoding the same protein have been found for this gene. However, use of an alternative translation start site produces an isoform which is truncated at the N-terminus as compared to the full-length protein.

Synonyms:

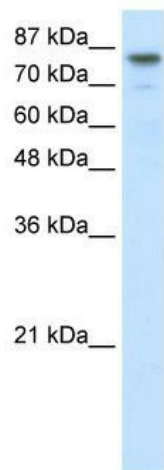
HIP116; HIP116A; HLTF1; RNF80; SMARCA3; SNF2L3; ZBU1

Note:

Immunogen Sequence Homology: Human: 100%; Dog: 93%; Pig: 93%; Horse: 93%; Mouse: 93%; Bovine: 93%; Rabbit: 93%; Rat: 86%

Protein Families:

Druggable Genome, Transcription Factors

Product images:

WB Suggested Anti-SMARCA3 Antibody Titration:
2.5 ug/ml; ELISA Titer: 1:312500; Positive Control:
Transfected 293T