

Product datasheet for **TA335399**

Chodl Rabbit Polyclonal Antibody

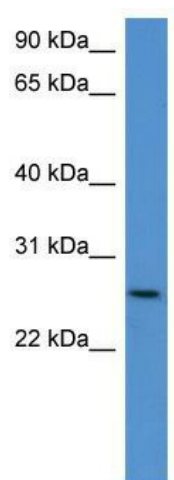
Product data:

| | |
|-------------------------|---|
| Product Type: | Primary Antibodies |
| Applications: | WB |
| Recommended Dilution: | WB |
| Reactivity: | Mouse |
| Host: | Rabbit |
| Isotype: | IgG |
| Clonality: | Polyclonal |
| Immunogen: | The immunogen for Anti-Chodl Antibody: synthetic peptide corresponding to a region of Mouse. Synthetic peptide located within the following region: YLYQWNDDRCNMKHNYICKYEPIHPTPEAEKPYLTNQPEETHENVVTE |
| Formulation: | Liquid. Purified antibody supplied in 1x PBS buffer with 0.09% (w/v) sodium azide and 2% sucrose. <i>Note that this product is shipped as lyophilized powder to China customers.</i> |
| Purification: | Affinity Purified |
| Conjugation: | Unconjugated |
| Storage: | Store at -20°C as received. |
| Stability: | Stable for 12 months from date of receipt. |
| Predicted Protein Size: | 30 kDa |
| Gene Name: | chondrolectin |
| Database Link: | NP_624360 Entrez Gene 246048 Mouse Q9CXM0 |
| Background: | Chodl is a single-pass type I membrane protein. The function of Chodl remains unknown. |
| Synonyms: | C21orf68; chondrolectin; FLJ12627; MT75; PRED12 |
| Note: | Immunogen Sequence Homology: Human: 100%; Rat: 93%; Pig: 92%; Guinea pig: 92%; Dog: 86%; Bovine: 86%; Rabbit: 86%; Horse: 79%; Mouse: 79% |



[View online »](#)

Product images:



WB Suggested Anti-Chodl Antibody Titration: 0.2-1 ug/ml; ELISA Titer: 1: 1562500; Positive Control: Mouse Kidney