

## Product datasheet for **TA335397**

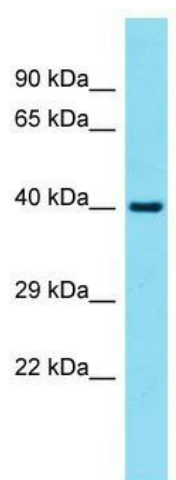
### FAM131A Rabbit Polyclonal Antibody

#### Product data:

Product Type:	Primary Antibodies
Applications:	WB
Recommended Dilution:	WB
Reactivity:	Human
Host:	Rabbit
Isotype:	IgG
Clonality:	Polyclonal
Immunogen:	The immunogen for Anti-FAM131A Antibody is: synthetic peptide directed towards the C-terminal region of Human FAM131A. Synthetic peptide located within the following region: QDSLNSPLTESCLSPAEEEPAPCKDCQPLCPPLTGSWERQRQASDLASS
Formulation:	Liquid. Purified antibody supplied in 1x PBS buffer with 0.09% (w/v) sodium azide and 2% sucrose. <i>Note that this product is shipped as lyophilized powder to China customers.</i>
Purification:	Affinity Purified
Conjugation:	Unconjugated
Storage:	Store at -20°C as received.
Stability:	Stable for 12 months from date of receipt.
Predicted Protein Size:	39 kDa
Gene Name:	family with sequence similarity 131 member A
Database Link:	<a href="#">NP_653236</a> <a href="#">Entrez Gene 131408 Human</a> <a href="#">Q6UXB0</a>
Background:	The function of this protein remains unknown.
Synonyms:	C3orf40; FLAT715; PRO1378
Note:	Immunogen Sequence Homology: Human: 100%; Dog: 93%; Pig: 93%; Rat: 93%; Horse: 93%; Rabbit: 93%; Guinea pig: 93%; Bovine: 92%; Mouse: 79%
Protein Families:	Secreted Protein



[View online »](#)

**Product images:**

Host: Rabbit; Target Name: FAM131A; Sample Tissue: Fetal Lung lysates; Antibody Dilution: 1.0 ug/ml