

## Product datasheet for TA335396

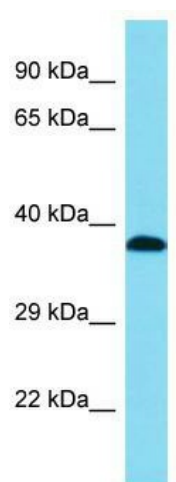
### DHRS13 Rabbit Polyclonal Antibody

#### Product data:

Product Type:	Primary Antibodies
Applications:	WB
Recommended Dilution:	WB
Reactivity:	Human
Host:	Rabbit
Isotype:	IgG
Clonality:	Polyclonal
Immunogen:	The immunogen for Anti-DHRS13 Antibody is: synthetic peptide directed towards the C-terminal region of Human DHRS13. Synthetic peptide located within the following region: DPQSEDSEAPSSLSTPHPEEPTVSQPYPSPQSSPDLSKMTHRIQAKVEPE
Formulation:	Liquid. Purified antibody supplied in 1x PBS buffer with 0.09% (w/v) sodium azide and 2% sucrose.
Purification:	Affinity Purified
Conjugation:	Unconjugated
Storage:	Store at -20°C as received.
Stability:	Stable for 12 months from date of receipt.
Predicted Protein Size:	38 kDa
Gene Name:	dehydrogenase/reductase 13
Database Link:	<a href="#">NP_653284</a> <a href="#">Entrez Gene 147015 Human</a> <a href="#">Q6UX07</a>
Background:	DHRS13 is a putative oxidoreductase.
Synonyms:	SDR7C5
Note:	Immunogen Sequence Homology: Human: 100%; Dog: 85%; Rabbit: 82%; Horse: 79%; Bovine: 79%
Protein Families:	Druggable Genome


[View online »](#)

## Product images:



Host: Rabbit; Target Name: DHRS13; Sample  
Tissue: MCF7 Whole Cell lysates; Antibody  
Dilution: 1.0 ug/ml