

Product datasheet for **TA335395**

PRSS21 Rabbit Polyclonal Antibody

Product data:

Product Type:	Primary Antibodies
Applications:	WB
Recommended Dilution:	WB
Reactivity:	Human
Host:	Rabbit
Isotype:	IgG
Clonality:	Polyclonal
Immunogen:	The immunogen for Anti-PRSS21 Antibody: synthetic peptide directed towards the N terminal of human PRSS21. Synthetic peptide located within the following region: RRVITSRIVGGEDAELGRWPWQGSLRLWDSHVCGVSLLSHRWALTAAHCF
Formulation:	Liquid. Purified antibody supplied in 1x PBS buffer with 0.09% (w/v) sodium azide and 2% sucrose. <i>Note that this product is shipped as lyophilized powder to China customers.</i>
Purification:	Affinity Purified
Conjugation:	Unconjugated
Storage:	Store at -20°C as received.
Stability:	Stable for 12 months from date of receipt.
Predicted Protein Size:	33 kDa
Gene Name:	protease, serine 21
Database Link:	NP_659206 Entrez Gene 10942 Human Q9Y6M0
Background:	This gene encodes a cell-surface anchored serine protease, which is a member of the trypsin family of serine proteases. It is predicted to be active on peptide linkages involving the carboxyl group of lysine or arginine. The protein localizes to the cytoplasm and the plasma membrane of premeiotic testicular germ cells and it may be involved in progression of testicular tumors of germ cell origin. Alternative splicing of this gene results in three transcript variants encoding three different isoforms.



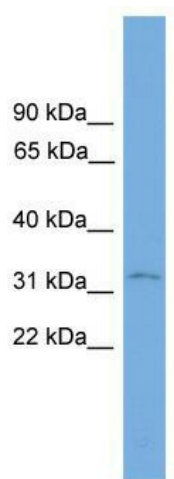
[View online »](#)

Synonyms: ESP-1; ESP1; TEST1; TESTISIN

Note: Immunogen Sequence Homology: Human: 100%; Rat: 92%; Mouse: 92%; Rabbit: 92%; Pig: 83%; Guinea pig: 83%

Protein Families: Druggable Genome

Product images:



WB Suggested Anti-PRSS21 Antibody Titration:
0.2-1 ug/ml; Positive Control: Human brain