

Product datasheet for **TA335391**

FAM18B2 (TVP23C) Rabbit Polyclonal Antibody

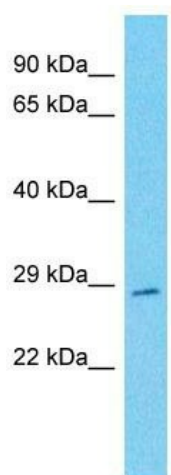
Product data:

Product Type:	Primary Antibodies
Applications:	WB
Recommended Dilution:	WB
Reactivity:	Human
Host:	Rabbit
Isotype:	IgG
Clonality:	Polyclonal
Immunogen:	The immunogen for Anti-TVP23C Antibody is: synthetic peptide directed towards the N-terminal region of Human TVP23C. Synthetic peptide located within the following region: FWAVKNVTGRLMVGLRWWNHIDEDGKSHWVFESRKESSQENKTVSEAESR
Formulation:	Liquid. Purified antibody supplied in 1x PBS buffer with 0.09% (w/v) sodium azide and 2% sucrose. <i>Note that this product is shipped as lyophilized powder to China customers.</i>
Purification:	Affinity Purified
Conjugation:	Unconjugated
Storage:	Store at -20°C as received.
Stability:	Stable for 12 months from date of receipt.
Predicted Protein Size:	30 kDa
Gene Name:	trans-golgi network vesicle protein 23 homolog C (<i>S. cerevisiae</i>)
Database Link:	NP_660344 Entrez Gene 201158 Human Q96ET8
Background:	The function of this protein remains unknown.
Synonyms:	FAM18B2
Note:	Immunogen Sequence Homology: Human: 100%; Horse: 86%; Rabbit: 86%; Dog: 79%; Rat: 79%; Bovine: 79%
Protein Families:	Transmembrane



[View online »](#)

Product images:



Host: Rabbit
Target Name: TVP23C
Sample Tissue: Hela Cell Lysate
Antibody Dilution: 1.0 μ g/ml

Host: Rabbit; Target Name: TVP23C; Sample
Tissue: Hela Whole cell lysates; Antibody Dilution:
1.0 ug/ml