

Product datasheet for **TA335389**

HS6ST2 Rabbit Polyclonal Antibody

Product data:

Product Type:	Primary Antibodies
Applications:	WB
Recommended Dilution:	WB
Reactivity:	Human
Host:	Rabbit
Isotype:	IgG
Clonality:	Polyclonal
Immunogen:	The immunogen for Anti-HS6ST2 Antibody is: synthetic peptide directed towards the C-terminal region of Human HS6ST2. Synthetic peptide located within the following region: QNPNPANQNLTQNLMQNLTSLSQKENRESPKQNSGKEQNDNTSNGTND
Formulation:	Liquid. Purified antibody supplied in 1x PBS buffer with 0.09% (w/v) sodium azide and 2% sucrose. <i>Note that this product is shipped as lyophilized powder to China customers.</i>
Purification:	Affinity Purified
Conjugation:	Unconjugated
Storage:	Store at -20°C as received.
Stability:	Stable for 12 months from date of receipt.
Predicted Protein Size:	54 kDa
Gene Name:	heparan sulfate 6-O-sulfotransferase 2
Database Link:	NP_671704 Entrez Gene 90161 Human Q96MM7



[View online »](#)

Background:

Heparan sulfate proteoglycans are ubiquitous components of the cell surface, extracellular matrix, and basement membranes, and interact with various ligands to influence cell growth, differentiation, adhesion, and migration. This gene encodes a member of the heparan sulfate (HS) sulfotransferase gene family, which catalyze the transfer of sulfate to HS. Different family members and isoforms are thought to synthesize heparan sulfates with tissue-specific structures and functions. Multiple transcript variants encoding different isoforms have been found for this gene.

Synonyms:

MGC130022; MGC130023

Note:

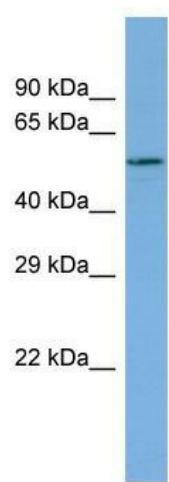
Immunogen Sequence Homology: Human: 100%; Dog: 79%; Pig: 79%

Protein Families:

Transmembrane

Protein Pathways:

Heparan sulfate biosynthesis

Product images:

Host: Rabbit; Target Name: HS6ST2; Sample
Tissue: PANC1 Whole cell lysates; Antibody
Dilution: 1.0 ug/ml