

Product datasheet for **TA335387**

DCAF4L2 Rabbit Polyclonal Antibody

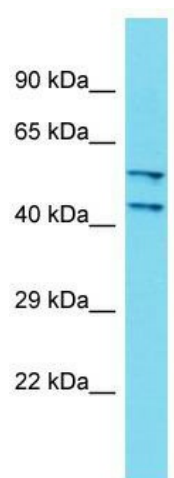
Product data:

Product Type:	Primary Antibodies
Applications:	WB
Recommended Dilution:	WB
Reactivity:	Human
Host:	Rabbit
Isotype:	IgG
Clonality:	Polyclonal
Immunogen:	The immunogen for Anti-DCAF4L2 Antibody is: synthetic peptide directed towards the N-terminal region of Human DCAF4L2. Synthetic peptide located within the following region: MESKRPRLLLEEADKQKKTVRVGLNAPSMLRKNQLGFLRFANYCRIARELR
Formulation:	Liquid. Purified antibody supplied in 1x PBS buffer with 0.09% (w/v) sodium azide and 2% sucrose. <i>Note that this product is shipped as lyophilized powder to China customers.</i>
Purification:	Affinity Purified
Conjugation:	Unconjugated
Storage:	Store at -20°C as received.
Stability:	Stable for 12 months from date of receipt.
Predicted Protein Size:	43 kDa
Gene Name:	DDB1 and CUL4 associated factor 4-like 2
Database Link:	NP_689631 Entrez Gene 138009 Human Q8NA75
Background:	The function of this protein remains unknown.
Synonyms:	WDR21C
Note:	Immunogen Sequence Homology: Human: 100%



[View online »](#)

Product images:



Host: Rabbit; Target Name: DCAF4L2; Sample
Tissue: Fetal Kidney lysates; Antibody Dilution: 1.0
ug/ml