

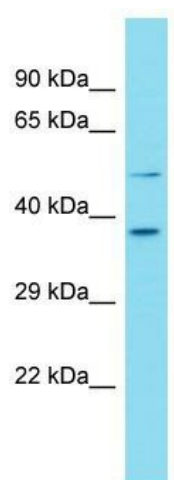
Product datasheet for **TA335386**

FAM187B Rabbit Polyclonal Antibody

Product data:

Product Type:	Primary Antibodies
Applications:	WB
Recommended Dilution:	WB
Reactivity:	Human
Host:	Rabbit
Isotype:	IgG
Clonality:	Polyclonal
Immunogen:	The immunogen for Anti-FAM187B Antibody is: synthetic peptide directed towards the N-terminal region of Human FAM187B. Synthetic peptide located within the following region: QCQQALLSGNDILLYCNSSGAHWYLLFTQGKKGRLTSLTNISNMEIMPEG
Formulation:	Liquid. Purified antibody supplied in 1x PBS buffer with 0.09% (w/v) sodium azide and 2% sucrose.
Purification:	Affinity Purified
Conjugation:	Unconjugated
Storage:	Store at -20°C as received.
Stability:	Stable for 12 months from date of receipt.
Predicted Protein Size:	40 kDa
Gene Name:	family with sequence similarity 187 member B
Database Link:	NP_689694 Entrez Gene 148109 Human Q17R55
Background:	The function of this protein remains unknown.
Synonyms:	TMEM162
Note:	Immunogen Sequence Homology: Human: 100%
Protein Families:	Transmembrane

[View online »](#)

Product images:

Host: Rabbit; Target Name: FAM187B; Sample
Tissue: 721_B Whole Cell lysates; Antibody
Dilution: 1.0 ug/ml