

## Product datasheet for **TA335381**

### **C1GALT1C1 Rabbit Polyclonal Antibody**

#### **Product data:**

<b>Product Type:</b>	Primary Antibodies
<b>Applications:</b>	WB
<b>Recommended Dilution:</b>	WB
<b>Reactivity:</b>	Rat
<b>Host:</b>	Rabbit
<b>Isotype:</b>	IgG
<b>Clonality:</b>	Polyclonal
<b>Immunogen:</b>	The immunogen for Anti-C1galt1c1 Antibody is: synthetic peptide directed towards the N-terminal region of Rat C1galt1c1. Synthetic peptide located within the following region: SFQVYCVLVKPKDVSLWAAVKETWTKHCDKAEFFSSENVKVFESINMDT
<b>Formulation:</b>	Liquid. Purified antibody supplied in 1x PBS buffer with 0.09% (w/v) sodium azide and 2% sucrose. <i>Note that this product is shipped as lyophilized powder to China customers.</i>
<b>Purification:</b>	Affinity Purified
<b>Conjugation:</b>	Unconjugated
<b>Storage:</b>	Store at -20°C as received.
<b>Stability:</b>	Stable for 12 months from date of receipt.
<b>Predicted Protein Size:</b>	34 kDa
<b>Gene Name:</b>	C1GALT1 specific chaperone 1
<b>Database Link:</b>	<a href="#">NP_689905</a> <a href="#">Entrez Gene 302499 Rat Q96EU7</a>
<b>Background:</b>	C1galt1c1 is a probable chaperone required for the generation of 1 O-glycan Gal-beta1-3GalNAc-alpha1-Ser/Thr (T antigen), which is a precursor for many extended O-glycans in glycoproteins. It probably acts as a specific molecular chaperone assisting the folding/stability of core 1 beta-3-galactosyltransferase (C1GALT1).
<b>Synonyms:</b>	C1GALT2; C38H2-L1; COSMC; HSPC067; MST143; TNPS



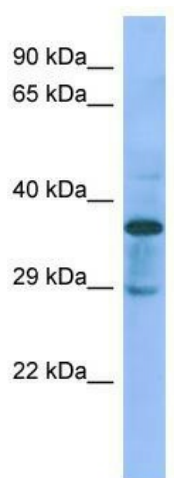
[View online »](#)

**Note:** Immunogen Sequence Homology: Dog: 100%; Rat: 100%; Horse: 100%; Human: 100%; Mouse: 100%; Bovine: 100%; Rabbit: 100%; Pig: 93%; Guinea pig: 93%

**Protein Families:** Transmembrane

**Protein Pathways:** Metabolic pathways, O-Glycan biosynthesis

**Product images:**



Host: Rabbit; Target Name: C1galt1c1; Sample Tissue: Rat pancreas lysates; Antibody Dilution: 1.0 ug/ml