

## Product datasheet for **TA335376**

### Fibulin 7 (FBLN7) Rabbit Polyclonal Antibody

#### Product data:

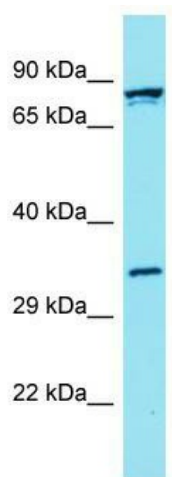
|                         |  |
|-------------------------|--|
| Product Type:           | Primary Antibodies   |
| Applications:           | WB   |
| Recommended Dilution:   | WB   |
| Reactivity:             | Human  |
| Host:                   | Rabbit   |
| Isotype:                | IgG  |
| Clonality:              | Polyclonal   |
| Immunogen:              | The immunogen for Anti-FBLN7 Antibody is: synthetic peptide directed towards the C-terminal region of Human FBLN7. Synthetic peptide located within the following region: VMQRSDRQTGDLILVQNLEGPQTLEVDVDMSEYLDRSFQANHVSQVTIFV |
| Formulation:            | Liquid. Purified antibody supplied in 1x PBS buffer with 0.09% (w/v) sodium azide and 2% sucrose.  |
| Purification:           | Affinity Purified  |
| Conjugation:            | Unconjugated   |
| Storage:                | Store at -20°C as received.  |
| Stability:              | Stable for 12 months from date of receipt.   |
| Predicted Protein Size: | 33 kDa   |
| Gene Name:              | fibulin 7  |
| Database Link:          | <a href="#">NP_694946</a><br><a href="#">Entrez Gene 129804 Human</a><br><a href="#">Q53RD9</a>  |
| Background:             | An adhesion molecule that interacts with extracellular matrix molecules in developing teeth and may play important roles in differentiation and maintenance of odontoblasts as well as in dentin formation.                  |
| Synonyms:               | TM14   |
| Note:                   | Immunogen Sequence Homology: Human: 100%; Dog: 93%; Pig: 93%; Rat: 93%; Horse: 93%; Bovine: 93%; Rabbit: 93%; Zebrafish: 93%; Guinea pig: 93%; Mouse: 92%  |



[View online »](#)

Protein Families: Druggable Genome

### Product images:



Host: Rabbit; Target Name: FBLN7; Sample  
Tissue: OVCAR-3 Whole Cell lysates; Antibody  
Dilution: 1.0 ug/ml