

Product datasheet for TA335372

GSG1 Rabbit Polyclonal Antibody

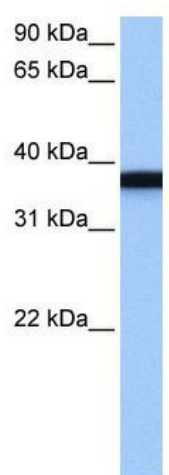
Product data:

Product Type:	Primary Antibodies
Applications:	WB
Recommended Dilution:	WB
Reactivity:	Human
Host:	Rabbit
Isotype:	IgG
Clonality:	Polyclonal
Immunogen:	The immunogen for Anti-GSG1 Antibody: synthetic peptide directed towards the C terminal of human GSG1. Synthetic peptide located within the following region: VGPLTSYHQYHNQPIHSVSEGVDFYSELRNKGFQRGASQELKEAVRSSVE
Formulation:	Liquid. Purified antibody supplied in 1x PBS buffer with 0.09% (w/v) sodium azide and 2% sucrose. <i>Note that this product is shipped as lyophilized powder to China customers.</i>
Purification:	Affinity Purified
Conjugation:	Unconjugated
Storage:	Store at -20°C as received.
Stability:	Stable for 12 months from date of receipt.
Predicted Protein Size:	36 kDa
Gene Name:	germ cell associated 1
Database Link:	NP_722545 Entrez Gene 83445 Human Q2KHT4
Background:	GSG1 belongs to the GSG1 family. GSG1 may cause the redistribution of PAPOLB from the cytosol to the endoplasmic reticulum.
Synonyms:	MGC3146; MGC111023
Note:	Immunogen Sequence Homology: Human: 100%; Rabbit: 77%
Protein Families:	Transmembrane



[View online »](#)

Product images:



WB Suggested Anti-GSG1 Antibody Titration: 0.2-1 ug/ml; Positive Control: NTERA2 cell lysate