

Product datasheet for **TA335370**

TRIM35 Rabbit Polyclonal Antibody

Product data:

Product Type:	Primary Antibodies
Applications:	IHC, WB
Recommended Dilution:	WB, IHC
Reactivity:	Human
Host:	Rabbit
Isotype:	IgG
Clonality:	Polyclonal
Immunogen:	The immunogen for Anti-TRIM35 Antibody: synthetic peptide directed towards the middle region of human TRIM35. Synthetic peptide located within the following region: ATKQLCKEFTDLLAQDRTPIGNSRPSPILEPGIQSCLTHFSLITHGFGAP
Formulation:	Liquid. Purified antibody supplied in 1x PBS buffer with 0.09% (w/v) sodium azide and 2% sucrose. <i>Note that this product is shipped as lyophilized powder to China customers.</i>
Purification:	Affinity Purified
Conjugation:	Unconjugated
Storage:	Store at -20°C as received.
Stability:	Stable for 12 months from date of receipt.
Predicted Protein Size:	56 kDa
Gene Name:	tripartite motif containing 35
Database Link:	NP_741983 Entrez Gene 23087 Human Q9UPQ4
Background:	TRIM35 is a member of the tripartite motif (TRIM) family. The TRIM motif includes three zinc-binding domains, a RING, a B-box type 1 and a B-box type 2, and a coiled-coil region. TRIM35 may play a role as a tumor suppressor, and is implicated in the cell death mechanism. The protein encoded by this gene is a member of the tripartite motif (TRIM) family. The TRIM motif includes three zinc-binding domains, a RING, a B-box type 1 and a B-box type 2, and a coiled-coil region. The function of this protein has not been identified.



[View online »](#)

Synonyms: HLS5; MAIR

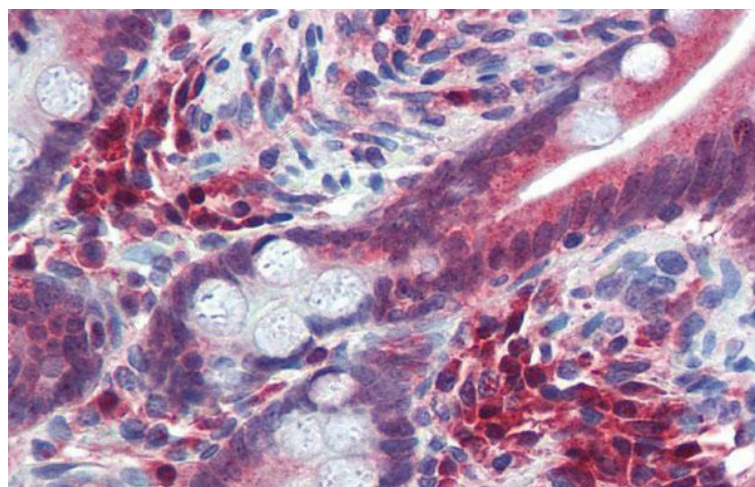
Note: Immunogen Sequence Homology: Dog: 100%; Pig: 100%; Horse: 100%; Human: 100%; Bovine: 100%; Rabbit: 93%; Rat: 92%; Mouse: 86%; Guinea pig: 79%

Protein Families: Druggable Genome

Product images:



WB Suggested Anti-TRIM35 Antibody Titration:
0.2-1 ug/ml; ELISA Titer: 1:312500; Positive
Control: Hela cell lysate



Immunohistochemistry with Human Small
Intestine tissue at an antibody concentration of
5.0 ug/ml using anti-TRIM35 antibody