

Product datasheet for **TA335369**

TRIM35 Rabbit Polyclonal Antibody

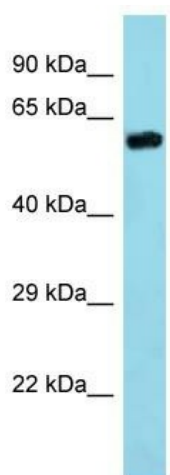
Product data:

Product Type:	Primary Antibodies
Applications:	WB
Recommended Dilution:	WB
Reactivity:	Mouse
Host:	Rabbit
Isotype:	IgG
Clonality:	Polyclonal
Immunogen:	The immunogen for Anti-Trim35 Antibody is: synthetic peptide directed towards the middle region of MOUSE Trim35. Synthetic peptide located within the following region: AAGWLKVADDLTSVINHG YRVQVENPERFSSAPCLLGSQVFSKGSWSWEV
Formulation:	Liquid. Purified antibody supplied in 1x PBS buffer with 0.09% (w/v) sodium azide and 2% sucrose.
Purification:	Affinity Purified
Conjugation:	Unconjugated
Storage:	Store at -20°C as received.
Stability:	Stable for 12 months from date of receipt.
Predicted Protein Size:	55 kDa
Gene Name:	tripartite motif containing 35
Database Link:	NP_741983 Entrez Gene 66854 Mouse Q9UPQ4
Background:	Trim35 may play a role as a tumor suppressor. It implicated in the cell death mechanism.
Synonyms:	HLS5; MAIR
Note:	Immunogen Sequence Homology: Dog: 100%; Horse: 100%; Human: 100%; Bovine: 100%; Rabbit: 100%; Pig: 93%; Rat: 93%; Mouse: 93%; Guinea pig: 93%
Protein Families:	Druggable Genome



[View online »](#)

Product images:



Host: Rabbit

Target Name: Trim35

Sample Tissue: Mouse Kidney Lysate

Antibody Dilution: 1.0 μ g/ml

Host: Rabbit; Target Name: Trim35; Sample Tissue: Mouse Kidney lysates; Antibody Dilution: 1.0 ug/ml