

## Product datasheet for **TA335368**

### ALF (GTF2A1L) Rabbit Polyclonal Antibody

#### Product data:

Product Type:	Primary Antibodies
Applications:	WB
Recommended Dilution:	WB
Reactivity:	Human
Host:	Rabbit
Isotype:	IgG
Clonality:	Polyclonal
Immunogen:	The immunogen for Anti-GTF2A1L Antibody: synthetic peptide directed towards the C terminal of human GTF2A1L. Synthetic peptide located within the following region: EFLGNIDGGDLKVP EEEADSISNEDSATNSSDNEDPQVNIVEEDPLNSGD
Formulation:	Liquid. Purified antibody supplied in 1x PBS buffer with 0.09% (w/v) sodium azide and 2% sucrose. <i>Note that this product is shipped as lyophilized powder to China customers.</i>
Purification:	Affinity Purified
Conjugation:	Unconjugated
Storage:	Store at -20°C as received.
Stability:	Stable for 12 months from date of receipt.
Predicted Protein Size:	49 kDa
Gene Name:	general transcription factor IIA subunit 1 like
Database Link:	<a href="#">NP_006863</a> <a href="#">Entrez Gene 11036 Human</a> <a href="#">Q9UNN4</a>
Background:	The assembly and stability of the RNA polymerase II transcription pre-initiation complex on a eukaryotic core promoter involve the effects of TFIIA on the interaction between TATA-binding protein (TBP) and DNA. This gene encodes a germ cell-specific counterpart of the large (alpha/beta) subunit of general transcription factor TFIIA that is able to stabilize the binding of TBP to DNA and may be uniquely important to testis biology.
Synonyms:	ALF



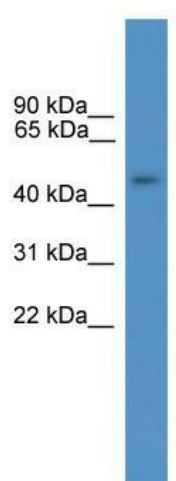
[View online »](#)

**Note:** Immunogen Sequence Homology: Human: 100%; Dog: 86%; Rat: 86%; Horse: 86%; Mouse: 79%; Bovine: 79%

**Protein Families:** Transcription Factors

**Protein Pathways:** Basal transcription factors

**Product images:**



WB Suggested Anti-GTF2A1L Antibody Titration:  
0.2-1 ug/ml; ELISA Titer: 1: 62500; Positive  
Control: Human Placenta