

Product datasheet for **TA335366**

SPAG6 Rabbit Polyclonal Antibody

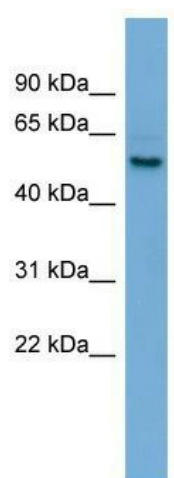
Product data:

Product Type:	Primary Antibodies
Applications:	WB
Recommended Dilution:	WB
Reactivity:	Human
Host:	Rabbit
Isotype:	IgG
Clonality:	Polyclonal
Immunogen:	The immunogen for Anti-SPAG6 Antibody: synthetic peptide directed towards the middle region of human SPAG6. Synthetic peptide located within the following region: LQKCTYLPALPFLYDAPPNILKHVVGQFSKVLFPWIFRYTSAEGGQLST
Formulation:	Liquid. Purified antibody supplied in 1x PBS buffer with 0.09% (w/v) sodium azide and 2% sucrose. <i>Note that this product is shipped as lyophilized powder to China customers.</i>
Purification:	Affinity Purified
Conjugation:	Unconjugated
Storage:	Store at -20°C as received.
Stability:	Stable for 12 months from date of receipt.
Predicted Protein Size:	50 kDa
Gene Name:	sperm associated antigen 6
Database Link:	NP_758442 Entrez Gene 9576 Human O75602
Background:	SPAG6 is important for structural integrity of the central apparatus in the sperm tail and for flagellar motility.
Synonyms:	CT141; pf16; Repro-SA-1
Note:	Immunogen Sequence Homology: Human: 100%



[View online »](#)

Product images:



WB Suggested Anti-SPAG6 Antibody Titration: 0.2-1 ug/ml; ELISA Titer: 1: 312500; Positive Control: HepG2 cell lysate