

Product datasheet for **TA335364**

ATP11C Rabbit Polyclonal Antibody

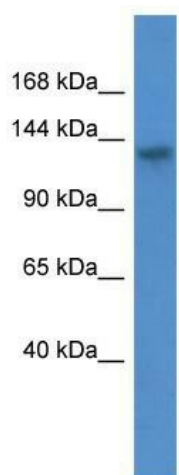
Product data:

| | |
|-------------------------|---|
| Product Type: | Primary Antibodies |
| Applications: | WB |
| Recommended Dilution: | WB |
| Reactivity: | Mouse |
| Host: | Rabbit |
| Isotype: | IgG |
| Clonality: | Polyclonal |
| Immunogen: | The immunogen for Anti-Atp11c Antibody: synthetic peptide corresponding to a region of Mouse. Synthetic peptide located within the following region: GLKVVWLTGDKMETAKSTCYACRLFQTNELLELTTKTIEESERKEDRLH |
| Formulation: | Liquid. Purified antibody supplied in 1x PBS buffer with 0.09% (w/v) sodium azide and 2% sucrose. <i>Note that this product is shipped as lyophilized powder to China customers.</i> |
| Purification: | Affinity Purified |
| Conjugation: | Unconjugated |
| Storage: | Store at -20°C as received. |
| Stability: | Stable for 12 months from date of receipt. |
| Predicted Protein Size: | 129 kDa |
| Gene Name: | ATPase phospholipid transporting 11C |
| Database Link: | NP_775965 Entrez Gene 286410 Human Q8NB49 |
| Background: | The function of Atp11c remains unknown. |
| Synonyms: | ATPIG; ATPIQ |
| Note: | Immunogen Sequence Homology: Dog: 100%; Pig: 100%; Rat: 100%; Human: 100%; Mouse: 100%; Bovine: 100%; Rabbit: 100%; Guinea pig: 100%; Horse: 93% |
| Protein Families: | Transmembrane |



[View online »](#)

Product images:



WB Suggested Anti-Atp11c Antibody Titration:
0.2-1 ug/ml; ELISA Titer: 1: 62500; Positive
Control: Mouse Brain