

## Product datasheet for **TA335362**

### CBX7 Rabbit Polyclonal Antibody

#### Product data:

Product Type:	Primary Antibodies
Applications:	WB
Recommended Dilution:	WB
Reactivity:	Human
Host:	Rabbit
Isotype:	IgG
Clonality:	Polyclonal
Immunogen:	The immunogen for Anti-CBX7 Antibody: synthetic peptide directed towards the middle region of human CBX7. Synthetic peptide located within the following region: ADLAEGPPPWTPALPSSEVTVDITANSITVTFREAQAAEGFFRDRSGKF
Formulation:	Liquid. Purified antibody supplied in 1x PBS buffer with 0.09% (w/v) sodium azide and 2% sucrose. <i>Note that this product is shipped as lyophilized powder to China customers.</i>
Purification:	Affinity Purified
Conjugation:	Unconjugated
Storage:	Store at -20°C as received.
Stability:	Stable for 12 months from date of receipt.
Predicted Protein Size:	28 kDa
Gene Name:	chromobox 7
Database Link:	<a href="#">NP_783640</a> <a href="#">Entrez Gene 23492 Human</a> <a href="#">O95931</a>
Background:	CBX7 is involved in maintaining the transcriptionally repressive state of genes. Modifies chromatin, rendering it heritably changed in its expressibility. This protein is regulator of cellular lifespan by maintaining the repression of CDKN2A, but not by inducing telomerase activity.
Synonyms:	chromobox homolog 7; OTTHUMP00000028984

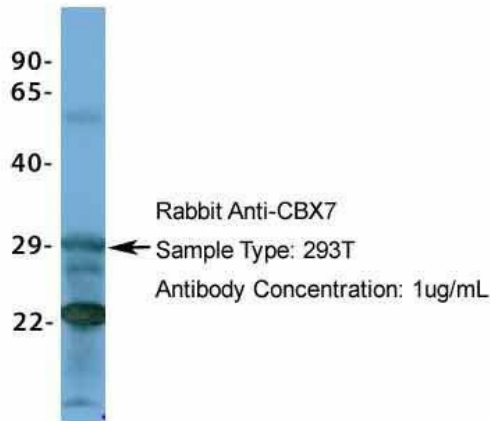


[View online »](#)

**Note:** Immunogen Sequence Homology: Pig: 100%; Rat: 100%; Horse: 100%; Human: 100%; Bovine: 100%; Rabbit: 100%; Guinea pig: 100%; Dog: 93%; Mouse: 93%

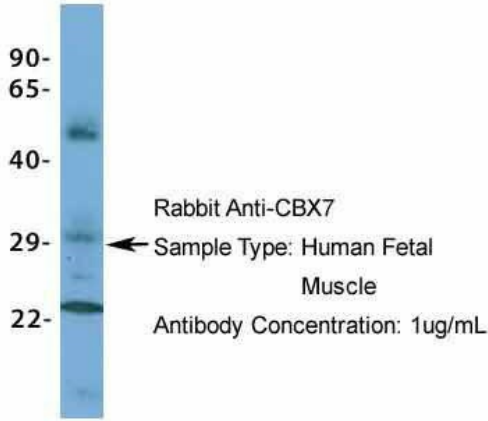
**Product images:**

WB Suggested Anti-CBX7 Antibody Titration: 0.2-1 ug/ml; ELISA Titer: 1:62500; Positive Control: HepG2 cell lysate

**CBX7**

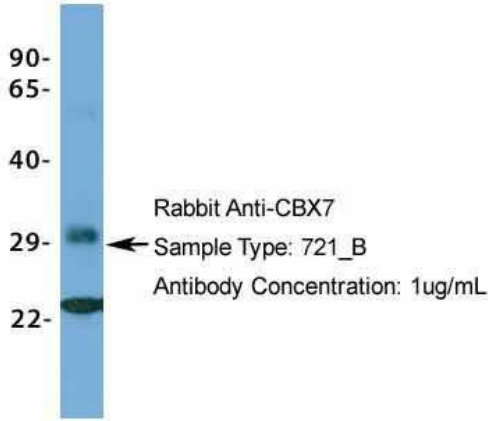
Host: Rabbit; Target Name: CBX7; Sample Tissue: 293T; Antibody Dilution: 1.0 ug/ml

### CBX7



Host: Rabbit; Target Name: CBX7; Sample Tissue: Human Fetal Muscle; Antibody Dilution: 1.0 ug/ml

### CBX7



Host: Rabbit; Target Name: CBX7; Sample Tissue: 721\_B; Antibody Dilution: 1.0 ug/ml