

Product datasheet for **TA335361**

FAM181B Rabbit Polyclonal Antibody

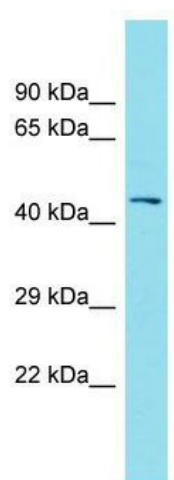
Product data:

Product Type:	Primary Antibodies
Applications:	WB
Recommended Dilution:	WB
Reactivity:	Human
Host:	Rabbit
Isotype:	IgG
Clonality:	Polyclonal
Immunogen:	The immunogen for Anti-FAM181B Antibody is: synthetic peptide directed towards the N-terminal region of Human FAM181B. Synthetic peptide located within the following region: LSGAEGGDVREATRDLLSFIDSASSNIKLALDKPGKSKRKVNHRKYLQKQ
Formulation:	Liquid. Purified antibody supplied in 1x PBS buffer with 0.09% (w/v) sodium azide and 2% sucrose.
Purification:	Affinity Purified
Conjugation:	Unconjugated
Storage:	Store at -20°C as received.
Stability:	Stable for 12 months from date of receipt.
Predicted Protein Size:	42 kDa
Gene Name:	family with sequence similarity 181 member B
Database Link:	NP_787081 Entrez Gene 220382 Human A6NEQ2
Background:	The function of this protein remains unknown.
Synonyms:	MGC33846
Note:	Immunogen Sequence Homology: Dog: 100%; Pig: 100%; Rat: 100%; Human: 100%; Mouse: 100%; Bovine: 100%; Zebrafish: 93%



[View online »](#)

Product images:



Host: Rabbit; Target Name: FAM181B; Sample
Tissue: Placenta lysates; Antibody Dilution: 1.0
ug/ml