

Product datasheet for **TA335359**

TRIM50 Rabbit Polyclonal Antibody

Product data:

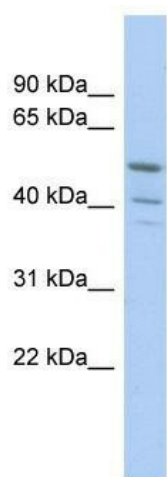
Product Type:	Primary Antibodies
Applications:	WB
Recommended Dilution:	WB
Reactivity:	Human
Host:	Rabbit
Isotype:	IgG
Clonality:	Polyclonal
Immunogen:	The immunogen for Anti-TRIM50 Antibody: synthetic peptide directed towards the middle region of human TRIM50. Synthetic peptide located within the following region: AEMPQARPLEGAFSPISFKPGLHQADIKLTVWKRLFRKVLPAPEPLKLDP
Formulation:	Liquid. Purified antibody supplied in 1x PBS buffer with 0.09% (w/v) sodium azide and 2% sucrose. <i>Note that this product is shipped as lyophilized powder to China customers.</i>
Purification:	Affinity Purified
Conjugation:	Unconjugated
Storage:	Store at -20°C as received.
Stability:	Stable for 12 months from date of receipt.
Predicted Protein Size:	55 kDa
Gene Name:	tripartite motif containing 50
Database Link:	NP_835226 Entrez Gene 135892 Human Q86XT4
Background:	TRIM50 belongs to the TRIM/RBCC family. It contains 1 B box-type zinc finger, 1 B30.2/SPRY domain and 1 RING-type zinc finger. TRIM50 is an E3 ubiquitin-protein ligase.
Synonyms:	TRIM50A
Note:	Immunogen Sequence Homology: Human: 100%; Dog: 93%; Pig: 93%; Rat: 93%; Horse: 93%; Mouse: 93%; Rabbit: 93%; Bovine: 87%; Guinea pig: 85%



[View online »](#)

Protein Families: Druggable Genome

Product images:



WB Suggested Anti-TRIM50 Antibody Titration:
0.2-1 ug/ml; ELISA Titer: 1:312500; Positive
Control: COLO205 cell lysate