

Product datasheet for **TA335357**

FADS6 Rabbit Polyclonal Antibody

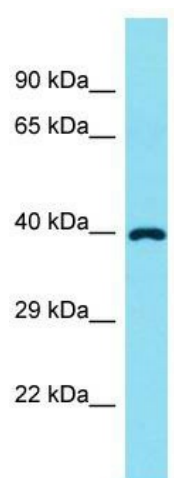
Product data:

Product Type:	Primary Antibodies
Applications:	WB
Recommended Dilution:	WB
Reactivity:	Human
Host:	Rabbit
Isotype:	IgG
Clonality:	Polyclonal
Immunogen:	The immunogen for Anti-FADS6 Antibody is: synthetic peptide directed towards the C-terminal region of Human FADS6. Synthetic peptide located within the following region: GFKNPSSALGCMFLTRSLLAHPYLHVNIHQHIGLPMFSRDNKPRRIHMMS
Formulation:	Liquid. Purified antibody supplied in 1x PBS buffer with 0.09% (w/v) sodium azide and 2% sucrose. <i>Note that this product is shipped as lyophilized powder to China customers.</i>
Purification:	Affinity Purified
Conjugation:	Unconjugated
Storage:	Store at -20°C as received.
Stability:	Stable for 12 months from date of receipt.
Predicted Protein Size:	39 kDa
Gene Name:	fatty acid desaturase 6
Database Link:	NP_835229 Entrez Gene 283985 Human Q8N9I5
Background:	The function of this protein remains unknown.
Synonyms:	FP18279
Note:	Immunogen Sequence Homology: Human: 100%; Pig: 93%; Dog: 86%; Rat: 86%; Horse: 86%; Mouse: 86%; Bovine: 86%; Rabbit: 86%; Guinea pig: 86%
Protein Families:	Transmembrane



[View online »](#)

Product images:



Host: Rabbit; Target Name: FADS6; Sample Tissue: Fetal Liver lysates; Antibody Dilution: 1.0 ug/ml