

Product datasheet for **TA335356**

Slc25a31 Rabbit Polyclonal Antibody

Product data:

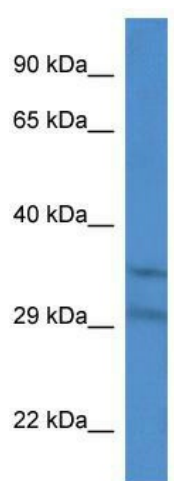
Product Type:	Primary Antibodies
Applications:	WB
Recommended Dilution:	WB
Reactivity:	Mouse
Host:	Rabbit
Isotype:	IgG
Clonality:	Polyclonal
Immunogen:	The immunogen for Anti-Slc25a31 Antibody: synthetic peptide corresponding to a region of Mouse. Synthetic peptide located within the following region: ARTRLGVDIGKGPQRQFTGLGDCIMKIAKSDGLIGLYQGFVSVQGIIV
Formulation:	Liquid. Purified antibody supplied in 1x PBS buffer with 0.09% (w/v) sodium azide and 2% sucrose. <i>Note that this product is shipped as lyophilized powder to China customers.</i>
Purification:	Affinity Purified
Conjugation:	Unconjugated
Storage:	Store at -20°C as received.
Stability:	Stable for 12 months from date of receipt.
Predicted Protein Size:	35 kDa
Gene Name:	solute carrier family 25 (mitochondrial carrier; adenine nucleotide translocator), member 31
Database Link:	NP_848473 Entrez Gene 73333 Mouse Q3V132
Background:	Slc25a31 catalyzes the exchange of ADP and ATP across the mitochondrial inner membrane. It may serve to mediate energy generating and energy consuming processes in the distal flagellum, possibly as a nucleotide shuttle between flagellar glycolysis, protein phosphorylation and mechanisms of motility.
Synonyms:	AAC4; ANT4; DKFZp434N1235; SFEC; SFEC35kDa



[View online »](#)

Note: Immunogen Sequence Homology: Dog: 100%; Rat: 100%; Human: 100%; Rabbit: 100%; Pig: 93%; Horse: 93%; Mouse: 93%; Bovine: 93%; Guinea pig: 93%

Product images:



WB Suggested Anti-Slc25a31 Antibody; Titration:
1.0 ug/ml; Positive Control: Mouse Heart