

Product datasheet for **TA335354**

ENPP7 Rabbit Polyclonal Antibody

Product data:

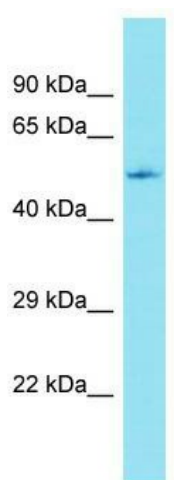
Product Type:	Primary Antibodies
Applications:	WB
Recommended Dilution:	WB
Reactivity:	Human
Host:	Rabbit
Isotype:	IgG
Clonality:	Polyclonal
Immunogen:	The immunogen for Anti-ENPP7 Antibody is: synthetic peptide directed towards the middle region of Human ENPP7. Synthetic peptide located within the following region: DLDLVTLYFGEPDSTGHRYGPESPERREMVRQVDRTVGYLRESIARNHLT
Formulation:	Liquid. Purified antibody supplied in 1x PBS buffer with 0.09% (w/v) sodium azide and 2% sucrose. <i>Note that this product is shipped as lyophilized powder to China customers.</i>
Purification:	Affinity Purified
Conjugation:	Unconjugated
Storage:	Store at -20°C as received.
Stability:	Stable for 12 months from date of receipt.
Predicted Protein Size:	49 kDa
Gene Name:	ectonucleotide pyrophosphatase/phosphodiesterase 7
Database Link:	NP_848638 Entrez Gene 339221 Human Q6UWV6
Background:	ENPP7 converts sphingomyelin to ceramide. It also has phospholipase C activity toward palmitoyl lyso-phosphocholine and does not appear to have nucleotide pyrophosphatase activity.
Synonyms:	339221; ALK-SMase; E-NPP 7; NPP-7; NPP7
Note:	Immunogen Sequence Homology: Rat: 100%; Human: 100%; Bovine: 86%; Zebrafish: 86%; Pig: 79%; Horse: 79%; Rabbit: 79%



[View online »](#)

Protein Pathways: Metabolic pathways, Sphingolipid metabolism

Product images:



Host: Rabbit; Target Name: ENPP7; Sample Tissue: NCI-H226 Whole Cell lysates; Antibody Dilution: 1.0 ug/ml