

Product datasheet for **TA335353**

WDR21A (DCAF4) Rabbit Polyclonal Antibody

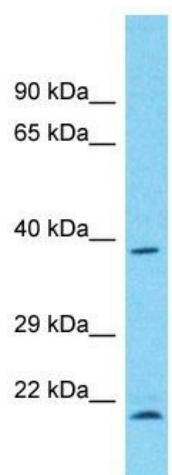
Product data:

Product Type:	Primary Antibodies
Applications:	WB
Recommended Dilution:	WB
Reactivity:	Human
Host:	Rabbit
Isotype:	IgG
Clonality:	Polyclonal
Immunogen:	The immunogen for Anti-DCAF4 Antibody is: synthetic peptide directed towards the C-terminal region of Human DCAF4. Synthetic peptide located within the following region: WSLHDARLLRTIPSPYPASKADIPSVAFSSRLGGSRGAPGLLMAVGQDLY
Formulation:	Liquid. Purified antibody supplied in 1x PBS buffer with 0.09% (w/v) sodium azide and 2% sucrose.
Purification:	Affinity Purified
Conjugation:	Unconjugated
Storage:	Store at -20°C as received.
Stability:	Stable for 12 months from date of receipt.
Predicted Protein Size:	35 kDa
Gene Name:	DDB1 and CUL4 associated factor 4
Database Link:	NP_851937 Entrez Gene 26094 Human Q8WV16
Background:	The function of this protein remains unknown.
Synonyms:	WDR21; WDR21A
Note:	Immunogen Sequence Homology: Human: 100%; Pig: 79%; Rat: 79%; Bovine: 79%; Rabbit: 79%; Guinea pig: 79%



[View online »](#)

Product images:



Host: Rabbit

Target Name: DCAF4

Sample Tissue: COLO205 Cell Lysate

Antibody Dilution: 1.0 μ g/ml

Host: Rabbit; Target Name: DCAF4; Sample
Tissue: COLO205 Whole Cell lysates; Antibody
Dilution: 1.0 ug/ml