

Product datasheet for **TA335352**

TAFA4 Rabbit Polyclonal Antibody

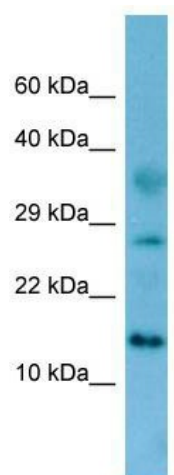
Product data:

Product Type:	Primary Antibodies
Applications:	WB
Recommended Dilution:	WB
Reactivity:	Rat
Host:	Rabbit
Isotype:	IgG
Clonality:	Polyclonal
Immunogen:	The immunogen for Anti-Fam19a4 Antibody is: synthetic peptide directed towards the N-terminal region of Rat Fam19a4. Synthetic peptide located within the following region: VIKQGTCEVVAVHRCCNKNRIEERSQTVKCSFCFGQVAGTTRAQPSCVEA
Formulation:	Liquid. Purified antibody supplied in 1x PBS buffer with 0.09% (w/v) sodium azide and 2% sucrose. <i>Note that this product is shipped as lyophilized powder to China customers.</i>
Purification:	Affinity Purified
Conjugation:	Unconjugated
Storage:	Store at -20°C as received.
Stability:	Stable for 12 months from date of receipt.
Predicted Protein Size:	14 kDa
Gene Name:	family with sequence similarity 19 member A4, C-C motif chemokine like
Database Link:	NP_872328 Entrez Gene 689043 Rat Q96LR4
Background:	The function of this protein remains unknown.
Synonyms:	TAFA-4; TAFA4
Note:	Immunogen Sequence Homology: Dog: 100%; Pig: 100%; Rat: 100%; Horse: 100%; Human: 100%; Mouse: 100%; Bovine: 100%; Zebrafish: 100%; Guinea pig: 100%; Rabbit: 93%
Protein Families:	Secreted Protein, Transmembrane



[View online »](#)

Product images:



WB Suggested Anti-Fam19a4 Antibody; Titration:
1.0 ug/ml; Positive Control: Rat Kidney