

Product datasheet for **TA335351**

FAM194B (ERICH6B) Rabbit Polyclonal Antibody

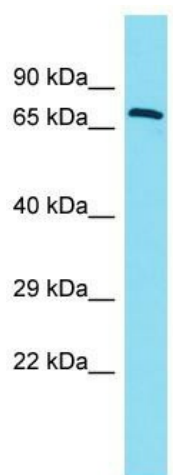
Product data:

Product Type:	Primary Antibodies
Applications:	WB
Recommended Dilution:	WB
Reactivity:	Human
Host:	Rabbit
Isotype:	IgG
Clonality:	Polyclonal
Immunogen:	The immunogen for Anti-FAM194B Antibody is: synthetic peptide directed towards the C-terminal region of Human FAM194B. Synthetic peptide located within the following region: LKKNYEKFKETILRIKRRREAQKLTEMTSFTFHLMSKPTPEKPETEEIQK
Formulation:	Liquid. Purified antibody supplied in 1x PBS buffer with 0.09% (w/v) sodium azide and 2% sucrose. <i>Note that this product is shipped as lyophilized powder to China customers.</i>
Purification:	Affinity Purified
Conjugation:	Unconjugated
Storage:	Store at -20°C as received.
Stability:	Stable for 12 months from date of receipt.
Predicted Protein Size:	75 kDa
Gene Name:	glutamate rich 6B
Database Link:	NP_872348 Entrez Gene 220081 Human Q5W0A0
Background:	The function of this protein remains unknown.
Synonyms:	FAM194B
Note:	Immunogen Sequence Homology: Human: 100%; Goat: 77%



[View online »](#)

Product images:



Host: Rabbit
Target Name: FAM194B
Sample Tissue: Fetal Lung Lysate
Antibody Dilution: 1.0 μ g/ml

Host: Rabbit; Target Name: FAM194B; Sample Tissue: Fetal Lung lysates; Antibody Dilution: 1.0 ug/ml