

Product datasheet for **TA335350**

CYB561D1 Rabbit Polyclonal Antibody

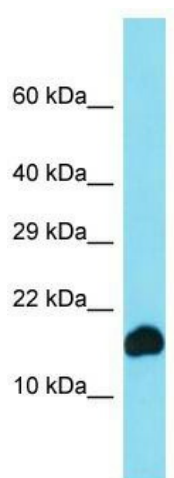
Product data:

Product Type:	Primary Antibodies
Applications:	WB
Recommended Dilution:	WB
Reactivity:	Human
Host:	Rabbit
Isotype:	IgG
Clonality:	Polyclonal
Immunogen:	The immunogen for Anti-CYB561D1 Antibody is: synthetic peptide directed towards the middle region of Human CYB561D1. Synthetic peptide located within the following region: TGPLMEDRSEGGRRARWVMPEIPALWEADAGGSLEVFSPGTLYSWPW RSA
Formulation:	Liquid. Purified antibody supplied in 1x PBS buffer with 0.09% (w/v) sodium azide and 2% sucrose. <i>Note that this product is shipped as lyophilized powder to China customers.</i>
Purification:	Affinity Purified
Conjugation:	Unconjugated
Storage:	Store at -20°C as received.
Stability:	Stable for 12 months from date of receipt.
Predicted Protein Size:	14 kDa
Gene Name:	cytochrome b561 family member D1
Database Link:	NP_872386 Entrez Gene 284613 Human Q8N8Q1
Background:	The function of this protein remains unknown.
Synonyms:	RP5-831G13.3
Note:	Immunogen Sequence Homology: Human: 100%
Protein Families:	Transmembrane



[View online »](#)

Product images:



Host: Rabbit; Target Name: CYB561D1; Sample Tissue: COLO205 Whole Cell lysates; Antibody Dilution: 1.0 ug/ml