

## Product datasheet for **TA335349**

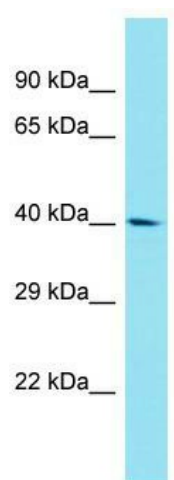
### **FAM170A Rabbit Polyclonal Antibody**

#### **Product data:**

Product Type:	Primary Antibodies
Applications:	WB
Recommended Dilution:	WB
Reactivity:	Human
Host:	Rabbit
Isotype:	IgG
Clonality:	Polyclonal
Immunogen:	The immunogen for Anti-FAM170A Antibody is: synthetic peptide directed towards the C-terminal region of Human FAM170A. Synthetic peptide located within the following region: CRVFTTMEALQEHVQFGIREGFSCHVFHLTMAQLTGNMESESTQDEQEEE
Formulation:	Liquid. Purified antibody supplied in 1x PBS buffer with 0.09% (w/v) sodium azide and 2% sucrose.
Purification:	Affinity Purified
Conjugation:	Unconjugated
Storage:	Store at -20°C as received.
Stability:	Stable for 12 months from date of receipt.
Predicted Protein Size:	36 kDa
Gene Name:	family with sequence similarity 170 member A
Database Link:	<a href="#">NP_877438</a> <a href="#">Entrez Gene 340069 Human</a> <a href="#">A1A519</a>
Background:	The function of this protein remains unknown.
Synonyms:	ZNFD
Note:	Immunogen Sequence Homology: Human: 100%; Mouse: 77%



[View online »](#)

**Product images:**

Host: Rabbit; Target Name: FAM170A; Sample  
Tissue: RPMI-8226 Whole Cell lysates; Antibody  
Dilution: 1.0 ug/ml