

Product datasheet for **TA335348**

IMPDH1 Rabbit Polyclonal Antibody

Product data:

Product Type:	Primary Antibodies
Applications:	IHC, WB
Recommended Dilution:	WB, IHC
Reactivity:	Human
Host:	Rabbit
Isotype:	IgG
Clonality:	Polyclonal
Immunogen:	The immunogen for Anti-IMPDH1 Antibody: synthetic peptide directed towards the middle region of human IMPDH1. Synthetic peptide located within the following region: KKGKLPVNDCELVAIIARTDLKKNRDYPLASKDSQKQLLCGAAVGTRE
Formulation:	Liquid. Purified antibody supplied in 1x PBS buffer with 0.09% (w/v) sodium azide and 2% sucrose. <i>Note that this product is shipped as lyophilized powder to China customers.</i>
Purification:	Affinity Purified
Conjugation:	Unconjugated
Storage:	Store at -20°C as received.
Stability:	Stable for 12 months from date of receipt.
Predicted Protein Size:	62 kDa
Gene Name:	IMP (inosine 5'-monophosphate) dehydrogenase 1
Database Link:	NP_899066 Entrez Gene 3614 Human P20839
Background:	IMPDH1 acts as a homotetramer to regulate cell growth. It is an enzyme that catalyzes the synthesis of xanthine monophosphate (XMP) from inosine-5'-monophosphate (IMP). This is the rate-limiting step in the de novo synthesis of guanine nucleotides. Defects in this gene are a cause of retinitis pigmentosa type 10 (RP10).
Synonyms:	IMPD; IMPD1; IMPDH-I; LCA11; RP10; sWSS2608



[View online »](#)

Note: Immunogen Sequence Homology: Dog: 100%; Pig: 100%; Rat: 100%; Horse: 100%; Human: 100%; Mouse: 100%; Bovine: 100%; Rabbit: 100%; Zebrafish: 100%; Guinea pig: 100%; Yeast: 79%

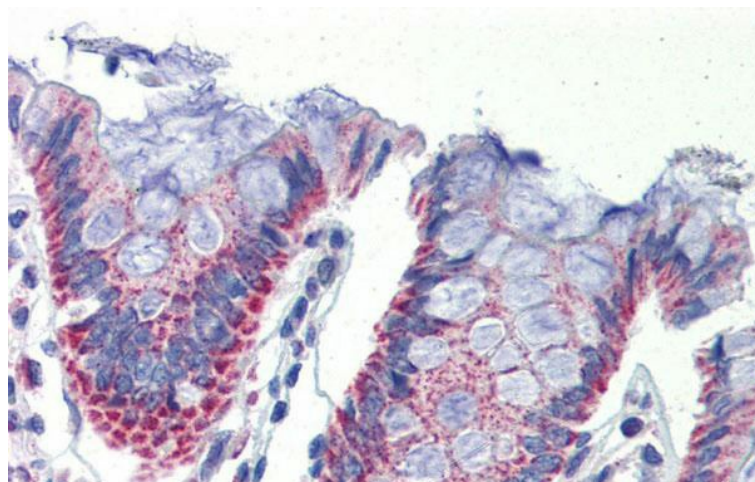
Protein Families: Druggable Genome

Protein Pathways: Drug metabolism - other enzymes, Metabolic pathways, Purine metabolism

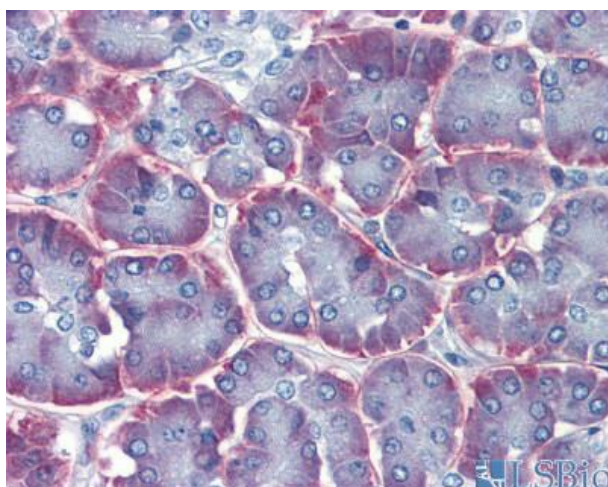
Product images:



WB Suggested Anti-IMPDH1 Antibody Titration: 1 ug/ml; Positive Control: HeLa cell lysate. IMPDH1 is supported by BioGPS gene expression data to be expressed in HeLa



Immunohistochemistry with Human Colon lysate tissue at an antibody concentration of 5.0 ug/ml using anti-IMPDH1 antibody



Human Pancreas