

Product datasheet for **TA335346**

ESP NL Rabbit Polyclonal Antibody

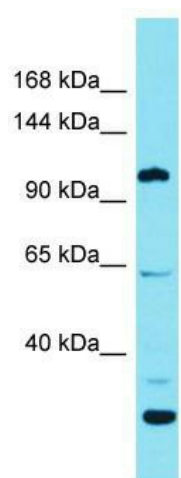
Product data:

Product Type:	Primary Antibodies
Applications:	WB
Recommended Dilution:	WB
Reactivity:	Human
Host:	Rabbit
Isotype:	IgG
Clonality:	Polyclonal
Immunogen:	The immunogen for Anti-ESP NL Antibody is: synthetic peptide directed towards the C-terminal region of Human ESP NL. Synthetic peptide located within the following region: EPGRKSG L T L L G P L P H A A V P C S G P E P T A Q R L G S R S Q Q G S F N G E D I C G Y I N
Formulation:	Liquid. Purified antibody supplied in 1x PBS buffer with 0.09% (w/v) sodium azide and 2% sucrose. <i>Note that this product is shipped as lyophilized powder to China customers.</i>
Purification:	Affinity Purified
Conjugation:	Unconjugated
Storage:	Store at -20°C as received.
Stability:	Stable for 12 months from date of receipt.
Predicted Protein Size:	105 kDa
Gene Name:	espin-like
Database Link:	NP_919288 Entrez Gene 339768 Human Q6ZVH7
Background:	The function of this protein remains unknown.
Synonyms:	FLJ42568; MGC99829
Note:	Immunogen Sequence Homology: Human: 100%



[View online »](#)

Product images:



Host: Rabbit; Target Name: ESPNL; Sample
Tissue: NCI-H226 Whole Cell lysates; Antibody
Dilution: 1.0 ug/ml