

## Product datasheet for **TA335344**

### FGFR1 Oncogene Partner (FGFR1OP) Rabbit Polyclonal Antibody

#### Product data:

Product Type:	Primary Antibodies
Applications:	WB
Recommended Dilution:	WB
Reactivity:	Human
Host:	Rabbit
Isotype:	IgG
Clonality:	Polyclonal
Immunogen:	The immunogen for Anti-FGFR1OP Antibody: synthetic peptide directed towards the N terminal of human FGFR1OP. Synthetic peptide located within the following region: FLQFFNLDFTLAVFQPETSTLQGLEGRENLARDLGIIEAEGTVGGPLLLLE
Formulation:	Liquid. Purified antibody supplied in 1x PBS buffer with 0.09% (w/v) sodium azide and 2% sucrose. <i>Note that this product is shipped as lyophilized powder to China customers.</i>
Purification:	Affinity Purified
Conjugation:	Unconjugated
Storage:	Store at -20°C as received.
Stability:	Stable for 12 months from date of receipt.
Predicted Protein Size:	42 kDa
Gene Name:	FGFR1 oncogene partner
Database Link:	<a href="#">NP_919410</a> <a href="#">Entrez Gene 11116 Human O95684</a>



[View online »](#)

**Background:**

FGFR1OP is a largely hydrophilic protein postulated to be a leucine-rich protein family member. A t(6;8)(q27;p11) chromosomal translocation, fusing this gene and the fibroblast growth factor receptor 1 (FGFR1) gene, has been found in cases of myeloproliferative disorder. The resulting chimeric protein contains the N-terminal leucine-rich region of this encoded protein fused to the catalytic domain of FGFR1. This gene is thought to play an important role in normal proliferation and differentiation of the erythroid lineage. This gene encodes a largely hydrophilic protein postulated to be a leucine-rich protein family member. A t(6;8)(q27;p11) chromosomal translocation, fusing this gene and the fibroblast growth factor receptor 1 (FGFR1) gene, has been found in cases of myeloproliferative disorder. The resulting chimeric protein contains the N-terminal leucine-rich region of this encoded protein fused to the catalytic domain of FGFR1. This gene is thought to play an important role in normal proliferation and differentiation of the erythroid lineage. Alternatively spliced transcript variants that encode different proteins have been identified.

**Synonyms:**

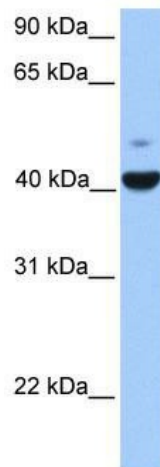
FOP

**Note:**

Immunogen Sequence Homology: Human: 100%; Dog: 93%; Pig: 93%; Rat: 93%; Horse: 93%; Bovine: 93%; Rabbit: 93%; Mouse: 86%; Guinea pig: 86%

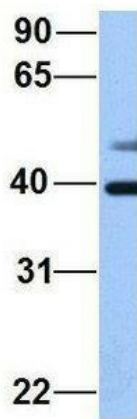
**Protein Families:**

Druggable Genome

**Product images:**

WB Suggested Anti-FGFR1OP Antibody Titration:  
0.2-1 ug/ml; Positive Control: Human Placenta

## FGFR1OP



Rabbit Anti-FGFR1OP  
Sample Type: Human HeLa  
Antibody Concentration: 1ug/mL

Host: Rabbit; Target Name: FGFR1OP; Sample  
Tissue: Human HeLa; Antibody Dilution: 1.0 ug/ml.  
There is BioGPS gene expression data showing  
that FGFR1OP is expressed in HeLa