

Product datasheet for **TA335342**

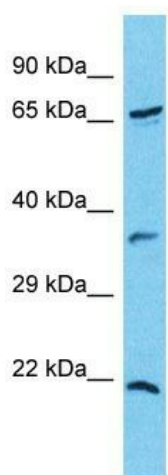
BCLAF3 Rabbit Polyclonal Antibody

Product data:

Product Type:	Primary Antibodies
Applications:	WB
Recommended Dilution:	WB
Reactivity:	Human
Host:	Rabbit
Isotype:	IgG
Clonality:	Polyclonal
Immunogen:	The immunogen for Anti-CXorf23 Antibody is: synthetic peptide directed towards the N-terminal region of Human CXorf23. Synthetic peptide located within the following region: DDHRVRGSGKGGKPPQRSIADSFREFGKWHEDELRHQRIQEEKYSQSTRR
Formulation:	Liquid. Purified antibody supplied in 1x PBS buffer with 0.09% (w/v) sodium azide and 2% sucrose.
Purification:	Affinity Purified
Conjugation:	Unconjugated
Storage:	Store at -20°C as received.
Stability:	Stable for 12 months from date of receipt.
Predicted Protein Size:	68 kDa
Gene Name:	chromosome X open reading frame 23
Database Link:	NP_938020 Entrez Gene 256643 Human A2AJT9
Background:	The function of this protein remains unknown.
Synonyms:	CXorf23
Note:	Immunogen Sequence Homology: Dog: 100%; Horse: 100%; Human: 100%; Pig: 93%
Protein Families:	Druggable Genome



[View online »](#)

Product images:

Host: Rabbit

Target Name: CXorf23

Sample Tissue: COLO205 Cell Lysate

Antibody Dilution: 1.0 μ g/ml

Host: Rabbit; Target Name: CXorf23; Sample Tissue: COLO205 Whole cell lysates; Antibody Dilution: 1.0 μ g/ml