

## Product datasheet for **TA335341**

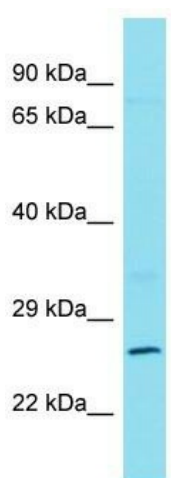
### **BCLAF3 Rabbit Polyclonal Antibody**

#### **Product data:**

Product Type:	Primary Antibodies
Applications:	WB
Recommended Dilution:	WB
Reactivity:	Human
Host:	Rabbit
Isotype:	IgG
Clonality:	Polyclonal
Immunogen:	The immunogen for Anti-CXorf23 Antibody is: synthetic peptide directed towards the C-terminal region of Human CXorf23. Synthetic peptide located within the following region: FHIASAAERDDQNSSFSKNYTTQRKDIITHKPFVEGHRNTRVRPFKSN
Formulation:	Liquid. Purified antibody supplied in 1x PBS buffer with 0.09% (w/v) sodium azide and 2% sucrose. <i>Note that this product is shipped as lyophilized powder to China customers.</i>
Purification:	Affinity Purified
Conjugation:	Unconjugated
Storage:	Store at -20°C as received.
Stability:	Stable for 12 months from date of receipt.
Predicted Protein Size:	26 kDa
Gene Name:	chromosome X open reading frame 23
Database Link:	<a href="#">NP_938020</a> <a href="#">Entrez Gene 256643 Human</a> <a href="#">A2AJT9</a>
Background:	The function of this protein remains unknown.
Synonyms:	CXorf23
Note:	Immunogen Sequence Homology: Human: 100%
Protein Families:	Druggable Genome



[View online »](#)

**Product images:**

Host: Rabbit  
Target Name: CXorf23  
Sample Tissue: NCI-H226 Cell Lysate  
Antibody Dilution: 1.0 $\mu$ g/ml

Host: Rabbit; Target Name: CXorf23; Sample  
Tissue: NCI-H226 Whole cell lysates; Antibody  
Dilution: 1.0 ug/ml