

Product datasheet for **TA335338**

FAM171A2 Rabbit Polyclonal Antibody

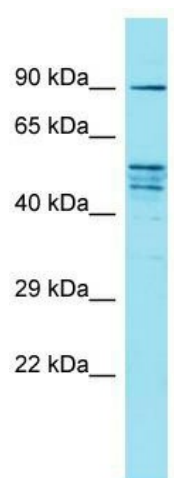
Product data:

Product Type:	Primary Antibodies
Applications:	WB
Recommended Dilution:	WB
Reactivity:	Human
Host:	Rabbit
Isotype:	IgG
Clonality:	Polyclonal
Immunogen:	The immunogen for Anti-FAM171A2 Antibody is: synthetic peptide directed towards the C-terminal region of Human FAM171A2. Synthetic peptide located within the following region: SSRSSASELRRDSLTSPEDELGAEVGDEAGDKKSPWQRREERPLMVFNVK
Formulation:	Liquid. Purified antibody supplied in 1x PBS buffer with 0.09% (w/v) sodium azide and 2% sucrose.
Purification:	Affinity Purified
Conjugation:	Unconjugated
Storage:	Store at -20°C as received.
Stability:	Stable for 12 months from date of receipt.
Predicted Protein Size:	84 kDa
Gene Name:	family with sequence similarity 171 member A2
Database Link:	NP_940877 Entrez Gene 284069 Human A8MVW0
Background:	The function of this protein remains unknown.
Synonyms:	MGC34829
Note:	Immunogen Sequence Homology: Pig: 100%; Rat: 100%; Human: 100%; Mouse: 100%; Bovine: 100%



[View online »](#)

Product images:



Host: Rabbit; Target Name: FAM171A2; Sample Tissue: HeLa Whole cell lysates; Antibody Dilution: 1.0 ug/ml