

Product datasheet for **TA335337**

EFCAB5 Rabbit Polyclonal Antibody

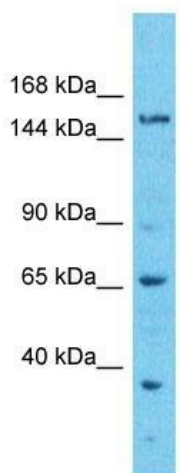
Product data:

Product Type:	Primary Antibodies
Applications:	WB
Recommended Dilution:	WB
Reactivity:	Human
Host:	Rabbit
Isotype:	IgG
Clonality:	Polyclonal
Immunogen:	The immunogen for Anti-EFCAB5 Antibody is: synthetic peptide directed towards the C-terminal region of Human EFCAB5. Synthetic peptide located within the following region: TEPNSPQDSKSMELEANVKLVRLDKAVILFFHPELFSSDFGSWDKCKF
Formulation:	Liquid. Purified antibody supplied in 1x PBS buffer with 0.09% (w/v) sodium azide and 2% sucrose.
Purification:	Affinity Purified
Conjugation:	Unconjugated
Storage:	Store at -20°C as received.
Stability:	Stable for 12 months from date of receipt.
Predicted Protein Size:	151 kDa
Gene Name:	EF-hand calcium binding domain 5
Database Link:	NP_940931 Entrez Gene 374786 Human A4FU69
Background:	The function of this protein remains unknown.
Synonyms:	DKFZp434G2420; DKFZp686I0638; FLJ46247
Note:	Immunogen Sequence Homology: Human: 100%



[View online »](#)

Product images:



Host: Rabbit

Target Name: EFCAB5

Sample Tissue: ACHN Cell Lysate

Antibody Dilution: 1.0µg/ml

Host: Rabbit; Target Name: EFCAB5; Sample
Tissue: ACHN Whole cell lysates; Antibody
Dilution: 1.0 ug/ml