

## Product datasheet for TA335336

### VAX1 Rabbit Polyclonal Antibody

#### Product data:

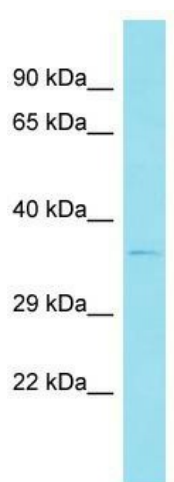
Product Type:	Primary Antibodies
Applications:	WB
Recommended Dilution:	WB
Reactivity:	Human
Host:	Rabbit
Isotype:	IgG
Clonality:	Polyclonal
Immunogen:	The immunogen for Anti-VAX1 Antibody is: synthetic peptide directed towards the N-terminal region of Human VAX1. Synthetic peptide located within the following region: HKESRESKGAEGNLPAAFLKEPQGAFSASGAAEDCNKSKSNSAADPDYCR
Formulation:	Liquid. Purified antibody supplied in 1x PBS buffer with 0.09% (w/v) sodium azide and 2% sucrose. <i>Note that this product is shipped as lyophilized powder to China customers.</i>
Purification:	Affinity Purified
Conjugation:	Unconjugated
Storage:	Store at -20°C as received.
Stability:	Stable for 12 months from date of receipt.
Predicted Protein Size:	36 kDa
Gene Name:	ventral anterior homeobox 1
Database Link:	<a href="#">NP_954582</a> <a href="#">Entrez Gene 11023 Human</a> <a href="#">Q5SQQ9</a>
Background:	VAX1 is a homeo-domain containing protein from a class of homeobox transcription factors which are conserved in vertebrates. It may play an important role in the development of anterior ventral forebrain and visual system.
Synonyms:	MCOPS11
Note:	Immunogen Sequence Homology: Pig: 100%; Human: 100%; Bovine: 100%; Dog: 93%; Rat: 92%; Mouse: 92%



[View online »](#)

Protein Families: Transcription Factors

### Product images:



Host: Rabbit; Target Name: VAX1; Sample Tissue: Ovary Tumor lysates; Antibody Dilution: 1.0 ug/ml