

Product datasheet for **TA335332**

FAM86A (EEF2KMT) Rabbit Polyclonal Antibody

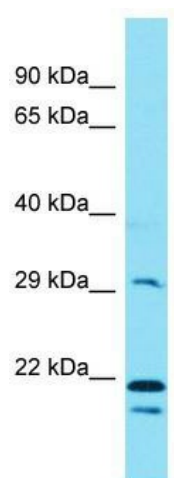
Product data:

Product Type:	Primary Antibodies
Applications:	WB
Recommended Dilution:	WB
Reactivity:	Human (Predicted: Rat, Dog, Cow, Guinea Pig, Horse)
Host:	Rabbit
Isotype:	IgG
Clonality:	Polyclonal
Immunogen:	The immunogen for Anti-FAM86A Antibody is: synthetic peptide directed towards the C-terminal region of Human FAM86A. Synthetic peptide located within the following region: CREHQRAPEVYVAFTVRNPETCQLFTTELGRAGIRWEVEPRHEQKLFPE
Formulation:	Liquid. Purified antibody supplied in 1x PBS buffer with 0.09% (w/v) sodium azide and 2% sucrose. <i>Note that this product is shipped as lyophilized powder to China customers.</i>
Purification:	Affinity Purified
Conjugation:	Unconjugated
Storage:	Store at -20°C as received.
Stability:	Stable for 12 months from date of receipt.
Predicted Protein Size:	32 kDa
Gene Name:	eukaryotic elongation factor 2 lysine methyltransferase
Database Link:	NP_963892 Entrez Gene 302931 RatEntrez Gene 100855633 DogEntrez Gene 196483 Human Q96G04
Background:	The function of this protein remains unknown.
Synonyms:	eEF2-KMT; FAM86A; SB153
Note:	Immunogen Sequence Homology: Human: 100%; Rat: 86%; Dog: 82%; Pig: 79%; Horse: 79%; Bovine: 79%; Guinea pig: 79%



[View online »](#)

Product images:



Host: Rabbit; Target Name: FAM86A; Sample
Tissue: MCF7 Whole Cell lysates; Antibody
Dilution: 1.0 ug/ml