

Product datasheet for **TA335329**

DENND10 Rabbit Polyclonal Antibody

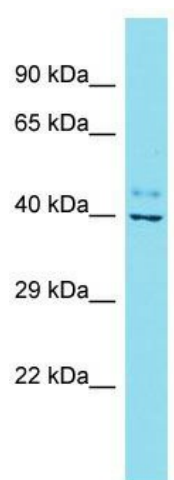
Product data:

Product Type:	Primary Antibodies
Applications:	WB
Recommended Dilution:	WB
Reactivity:	Human
Host:	Rabbit
Isotype:	IgG
Clonality:	Polyclonal
Immunogen:	The immunogen for Anti-FAM45A Antibody is: synthetic peptide directed towards the C-terminal region of Human FAM45A. Synthetic peptide located within the following region: GQLIVQSAEDPEKSESHVIQDIALKTREIFTNLAPFSEVSADGEKRVLNL
Formulation:	Liquid. Purified antibody supplied in 1x PBS buffer with 0.09% (w/v) sodium azide and 2% sucrose.
Purification:	Affinity Purified
Conjugation:	Unconjugated
Storage:	Store at -20°C as received.
Stability:	Stable for 12 months from date of receipt.
Predicted Protein Size:	40 kDa
Gene Name:	family with sequence similarity 45 member A
Database Link:	NP_996892 Entrez Gene 404636 Human Q8TCE6
Background:	The function of this protein remains unknown.
Synonyms:	family with sequence similarity 45; fc44d12; fd19e06; member A; si:ch211-117n7.2; wu:fc44d12; wu:fd19e06
Note:	Immunogen Sequence Homology: Human: 100%; Dog: 86%; Pig: 86%; Rat: 86%; Horse: 86%; Mouse: 86%; Bovine: 86%; Rabbit: 86%; Guinea pig: 79%



[View online »](#)

Product images:



Host: Rabbit; Target Name: FAM45A; Sample
Tissue: Fetal Lung lysates; Antibody Dilution: 1.0
ug/ml