

Product datasheet for **TA335327**

FAM177B Rabbit Polyclonal Antibody

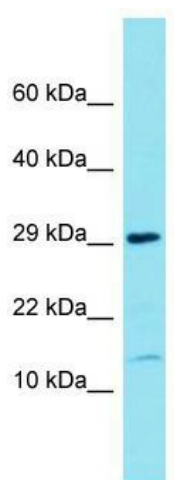
Product data:

Product Type:	Primary Antibodies
Applications:	WB
Recommended Dilution:	WB
Reactivity:	Human
Host:	Rabbit
Isotype:	IgG
Clonality:	Polyclonal
Immunogen:	The immunogen for Anti-FAM177B Antibody is: synthetic peptide directed towards the N-terminal region of Human FAM177B. Synthetic peptide located within the following region: LDLEKSVPSKKTTPKRIHFVDGDIMEEYSTEEREEEEKEEQSTNSTLDP
Formulation:	Liquid. Purified antibody supplied in 1x PBS buffer with 0.09% (w/v) sodium azide and 2% sucrose.
Purification:	Affinity Purified
Conjugation:	Unconjugated
Storage:	Store at -20°C as received.
Stability:	Stable for 12 months from date of receipt.
Predicted Protein Size:	13 kDa
Gene Name:	family with sequence similarity 177 member B
Database Link:	NP_997351 Entrez Gene 400823 Human A6PVY3
Background:	The function of this protein remains unknown.
Synonyms:	RP11-452F19.2
Note:	Immunogen Sequence Homology: Human: 100%; Horse: 86%; Dog: 79%



[View online »](#)

Product images:



Host: Rabbit; Target Name: FAM177B; Sample
Tissue: THP-1 Whole Cell lysates; Antibody
Dilution: 1.0 ug/ml