

Product datasheet for TA335325

ZC3H14 Rabbit Polyclonal Antibody

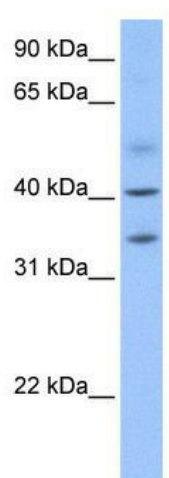
Product data:

Product Type:	Primary Antibodies
Applications:	WB
Recommended Dilution:	WB
Reactivity:	Human
Host:	Rabbit
Isotype:	IgG
Clonality:	Polyclonal
Immunogen:	The immunogen for Anti-ZC3H14 Antibody: synthetic peptide directed towards the N terminal of human ZC3H14. Synthetic peptide located within the following region: KFPSPPLPIFLPPEPVDLGSITSSSCSLNELDNISHLLRKISADINEIKG
Formulation:	Liquid. Purified antibody supplied in 1x PBS buffer with 0.09% (w/v) sodium azide and 2% sucrose. <i>Note that this product is shipped as lyophilized powder to China customers.</i>
Purification:	Affinity Purified
Conjugation:	Unconjugated
Storage:	Store at -20°C as received.
Stability:	Stable for 12 months from date of receipt.
Predicted Protein Size:	34 kDa
Gene Name:	zinc finger CCCH-type containing 14
Database Link:	NP_997545 Entrez Gene 79882 Human Q6PJT7
Background:	ZC3H14 belongs to the ZC3H14 family. It contains 2 C3H1-type zinc fingers. ZC3H14 binds the polyadenosine RNA oligonucleotides.
Synonyms:	MRT56; MSUT-2; NY-REN-37; SUT2; UKp68
Note:	Immunogen Sequence Homology: Human: 100%; Rat: 86%; Mouse: 86%



[View online »](#)

Product images:



WB Suggested Anti-ZC3H14 Antibody Titration:
0.2-1 ug/ml; Positive Control: Human heart