

Product datasheet for **TA335324**

TAFA1 Rabbit Polyclonal Antibody

Product data:

Product Type:	Primary Antibodies
Applications:	WB
Recommended Dilution:	WB
Reactivity:	Human
Host:	Rabbit
Isotype:	IgG
Clonality:	Polyclonal
Immunogen:	The immunogen for Anti-FAM19A1 Antibody is: synthetic peptide directed towards the N-terminal region of Human FAM19A1. Synthetic peptide located within the following region: GGTCEVIAAHRCCNKNRIEERSQTVKCSCLPGKVAGTTRNRPSVDASIV
Formulation:	Liquid. Purified antibody supplied in 1x PBS buffer with 0.09% (w/v) sodium azide and 2% sucrose. <i>Note that this product is shipped as lyophilized powder to China customers.</i>
Purification:	Affinity Purified
Conjugation:	Unconjugated
Storage:	Store at -20°C as received.
Stability:	Stable for 12 months from date of receipt.
Predicted Protein Size:	15 kDa
Gene Name:	family with sequence similarity 19 member A1, C-C motif chemokine like
Database Link:	NP_998774 Entrez Gene 407738 Human Q7Z5A9
Background:	This gene is a member of the Tafa family which is composed of five highly homologous genes that encode small secreted proteins. These proteins contain conserved cysteine residues at fixed positions, and are distantly related to MIP-1alpha, a member of the CC-chemokine family. The Tafa proteins are predominantly expressed in specific regions of the brain, and are postulated to function as brain-specific chemokines or neurokinins that act as regulators of immune and nervous cells.



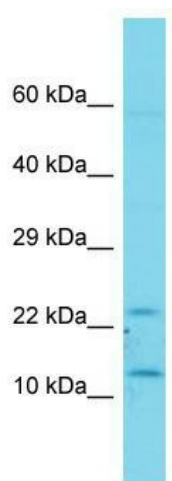
[View online »](#)

Synonyms: TAF1-1; TAF1

Note: Immunogen Sequence Homology: Dog: 100%; Pig: 100%; Rat: 100%; Horse: 100%; Human: 100%; Mouse: 100%; Bovine: 100%; Rabbit: 100%; Zebrafish: 100%; Guinea pig: 100%

Protein Families: Secreted Protein, Transmembrane

Product images:



Host: Rabbit; Target Name: FAM19A1; Sample Tissue: Fetal Kidney lysates; Antibody Dilution: 1.0 ug/ml