

Product datasheet for **TA335322**

C19orf67 Rabbit Polyclonal Antibody

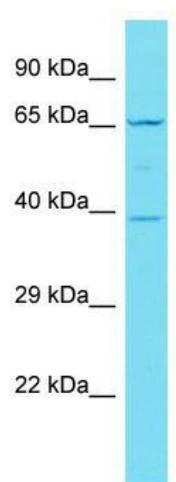
Product data:

Product Type:	Primary Antibodies
Applications:	WB
Recommended Dilution:	WB
Reactivity:	Human
Host:	Rabbit
Isotype:	IgG
Clonality:	Polyclonal
Immunogen:	The immunogen for Anti-C19orf67 Antibody is: synthetic peptide directed towards the N-terminal region of Human C19orf67. Synthetic peptide located within the following region: GPAPPRLSLDTLFPITQQLRYLLKKADDFQSYLLYSRDQVQKEQLAKAM
Formulation:	Liquid. Purified antibody supplied in 1x PBS buffer with 0.09% (w/v) sodium azide and 2% sucrose.
Purification:	Affinity Purified
Conjugation:	Unconjugated
Storage:	Store at -20°C as received.
Stability:	Stable for 12 months from date of receipt.
Predicted Protein Size:	39 kDa
Gene Name:	chromosome 19 open reading frame 67
Database Link:	NP_001264307 Entrez Gene 646457 Human A6NJJ6
Background:	The function of this protein remains unknown.
Synonyms:	C19orf67
Note:	Immunogen Sequence Homology: Human: 100%; Dog: 93%; Pig: 93%; Rat: 93%; Mouse: 93%; Bovine: 93%; Guinea pig: 93%; Horse: 86%; Rabbit: 86%



[View online »](#)

Product images:



Host: Rabbit; Target Name: C19orf67; Sample
Tissue: Jurkat Whole Cell lysates; Antibody
Dilution: 1.0 ug/ml