

Product datasheet for **TA335320**

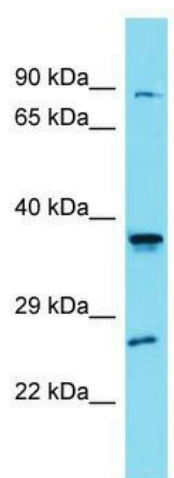
SLC35G4 Rabbit Polyclonal Antibody

Product data:

Product Type:	Primary Antibodies
Applications:	WB
Recommended Dilution:	WB
Reactivity:	Human
Host:	Rabbit
Isotype:	IgG
Clonality:	Polyclonal
Immunogen:	The immunogen for Anti-SLC35G4 Antibody is: synthetic peptide directed towards the N-terminal region of Human SLC35G4. Synthetic peptide located within the following region: SHPYFNLDPSTHPSPPSTPPSLHWHQRCQPSDATNGLLVALLGGGLPAGF
Formulation:	Liquid. Purified antibody supplied in 1x PBS buffer with 0.09% (w/v) sodium azide and 2% sucrose. <i>Note that this product is shipped as lyophilized powder to China customers.</i>
Purification:	Affinity Purified
Conjugation:	Unconjugated
Storage:	Store at -20°C as received.
Stability:	Stable for 12 months from date of receipt.
Predicted Protein Size:	37 kDa
Gene Name:	solute carrier family 35 member G4
Database Link:	NP_001269229 Entrez Gene 646000 Human P0C7Q5
Background:	The function of this protein remains unknown.
Synonyms:	AMAC1L1; SLC35G4P
Note:	Immunogen Sequence Homology: Human: 100%; Dog: 86%; Pig: 86%; Rat: 86%; Guinea pig: 86%; Rabbit: 79%; Horse: 77%



[View online »](#)

Product images:

Host: Rabbit; Target Name: SLC35G4; Sample
Tissue: HepG2 Whole Cell lysates; Antibody
Dilution: 1.0 ug/ml