

Product datasheet for **TA335319**

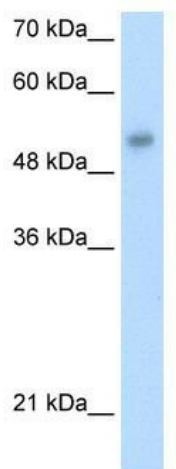
ONECUT3 Rabbit Polyclonal Antibody

Product data:

Product Type:	Primary Antibodies
Applications:	WB
Recommended Dilution:	WB
Reactivity:	Human
Host:	Rabbit
Isotype:	IgG
Clonality:	Polyclonal
Immunogen:	The immunogen for Anti-ONECUT3 Antibody: synthetic peptide directed towards the C terminal of human LOC390874. Synthetic peptide located within the following region: ETFRRMWKWLQEPEFQRMSALRLAACKRKEQEQKERALQPKKQRLVFTD
Formulation:	Liquid. Purified antibody supplied in 1x PBS buffer with 0.09% (w/v) sodium azide and 2% sucrose. <i>Note that this product is shipped as lyophilized powder to China customers.</i>
Purification:	Protein A purified
Conjugation:	Unconjugated
Storage:	Store at -20°C as received.
Stability:	Stable for 12 months from date of receipt.
Predicted Protein Size:	54 kDa
Gene Name:	one cut homeobox 3
Database Link:	NP_001073957 Entrez Gene 390874 Human O60422
Background:	ONECUT3 is a new protein with unknown function.
Synonyms:	OC3
Note:	Immunogen Sequence Homology: Dog: 100%; Pig: 100%; Human: 100%; Bovine: 100%; Rat: 93%; Mouse: 93%
Protein Families:	Druggable Genome



[View online »](#)

Product images:

WB Suggested Anti-ONECUT3 Antibody Titration:
1.25 ug/ml; Positive Control: HepG2 cell lysate