

Name: Rabbit Polyclonal Anti-TMEM195 Antibody Product Data Sheet - ANTIBODY	Catalog: TA335317
--	--------------------------

Components:	Rabbit Polyclonal Anti-TMEM195 Antibody (TA335317)
Amount:	100ul
Immunogen:	The immunogen for anti-TMEM195 antibody: synthetic peptide directed towards the middle region of human TMEM195. Synthetic peptide located within the following region: AGHQTHHSSDYNLSTALRQSVLQIYTSWIFYSPLALFIPPSVYAVHLQF
Host:	Rabbit
Isotype:	IgG
Species Reactivity:	Human
Guaranteed Applications:	WB
Suggested Dilutions:	WB
Concentration:	
Buffer:	Liquid. Purified antibody supplied in 1x PBS buffer with 0.09% (w/v) sodium azide and 2% sucrose.
Purification:	Affinity Purified
Storage Condition:	Shipped at -20°C or with ice packs, Upon delivery store at -20°C. Dilute in PBS(pH7.3) if necessary. Stable for 12 months from date of receipt. Avoid repeated freeze-thaws.

Target

Target Name:	AGMO
Alternative Name:	TMEM195; TMEM195
Database Link:	NP_001004320 Entrez Gene 392636 human

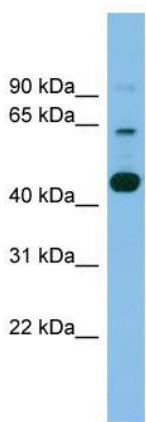
[Entrez Gene 319660 mouse](#)
[Entrez Gene 362732 rat](#)
[Entrez Gene 475247 dog](#)

Function: TMEM195 belongs to the TMEM195 family. It is a multi-pass membrane protein. The function of the TMEM195 protein remains.

Other designations: transmembrane protein 195; glyceryl-ether monooxygenase

Other: TMEM195; TMEM195

Validation Data



WB Suggested Anti-TMEM195 Antibody Titration: 0.2-1 ug/ml; ELISA Titer: 1: 1562500; Positive Control: COLO205 cell lysate

* More validation images may be available on our website:

<https://www.origene.com/catalog/antibodies/primary-antibodies/ta335317/tmem195-agmo-rabbit-polyclonal-antibody>