

## Product datasheet for **TA335315**

### TMEM195 (AGMO) Rabbit Polyclonal Antibody

#### Product data:

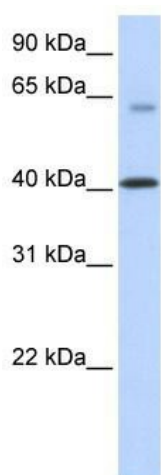
Product Type:	Primary Antibodies
Applications:	WB
Recommended Dilution:	WB
Reactivity:	Human
Host:	Rabbit
Isotype:	IgG
Clonality:	Polyclonal
Immunogen:	The immunogen for anti-TMEM195 antibody: synthetic peptide directed towards the N terminal of human TMEM195. Synthetic peptide located within the following region: MKNPEAQQDVSVSQGFRLFYTMKPSETSFQTLLEVPDYVKKATPFFISL
Formulation:	Liquid. Purified antibody supplied in 1x PBS buffer with 0.09% (w/v) sodium azide and 2% sucrose. <i>Note that this product is shipped as lyophilized powder to China customers.</i>
Purification:	Affinity Purified
Conjugation:	Unconjugated
Storage:	Store at -20°C as received.
Stability:	Stable for 12 months from date of receipt.
Predicted Protein Size:	51 kDa
Gene Name:	alkylglycerol monooxygenase
Database Link:	<a href="#">NP_001004320</a> <a href="#">Entrez Gene 392636 Human</a> <a href="#">Q6ZNB7</a>
Background:	TMEM195 belongs to the TMEM195 family. It is a multi-pass membrane protein. The function of the TMEM195 protein remains.
Synonyms:	TMEM195
Note:	Immunogen Sequence Homology: Rat: 100%; Horse: 100%; Human: 100%; Mouse: 100%; Dog: 93%; Bovine: 93%; Pig: 86%; Rabbit: 86%



[View online »](#)

Protein Families: Transmembrane

### Product images:



WB Suggested Anti-TMEM195 Antibody Titration:  
0.2-1 ug/ml; ELISA Titer: 1: 1562500; Positive  
Control: Transfected 293T