

Product datasheet for **TA335314**

FCRL6 Rabbit Polyclonal Antibody

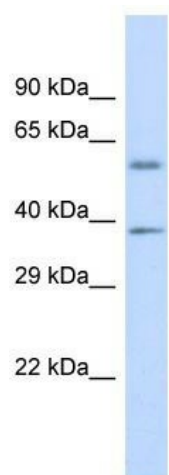
Product data:

Product Type:	Primary Antibodies
Applications:	WB
Recommended Dilution:	WB
Reactivity:	Human
Host:	Rabbit
Isotype:	IgG
Clonality:	Polyclonal
Immunogen:	The immunogen for anti-FCRL6 antibody is: synthetic peptide directed towards the C-terminal region of Human FCRL6. Synthetic peptide located within the following region: HSAPCGGTTSLLPVKSEQDAGNYSCEAENSVSRERSEPKKLSLKGSQVL
Formulation:	Liquid. Purified antibody supplied in 1x PBS buffer with 0.09% (w/v) sodium azide and 2% sucrose.
Purification:	Affinity Purified
Conjugation:	Unconjugated
Storage:	Store at -20°C as received.
Stability:	Stable for 12 months from date of receipt.
Predicted Protein Size:	34 kDa
Gene Name:	Fc receptor like 6
Database Link:	NP_001004310 Entrez Gene 343413 Human Q6DN72
Background:	The function of this protein remains unknown.
Synonyms:	FcRH6
Note:	Immunogen Sequence Homology: Human: 100%; Rabbit: 92%; Pig: 86%; Guinea pig: 86%
Protein Families:	Druggable Genome, Transmembrane



[View online »](#)

Product images:



Host: Rabbit; Target Name: FCRL6; Sample
Tissue: Placenta lysates; Antibody Dilution: 1.0
ug/ml