

## Product datasheet for **TA335312**

### ALG11 Rabbit Polyclonal Antibody

#### Product data:

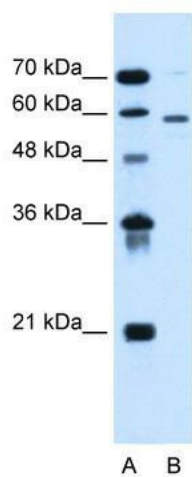
Product Type:	Primary Antibodies
Applications:	IHC, WB
Recommended Dilution:	WB, IHC
Reactivity:	Human
Host:	Rabbit
Isotype:	IgG
Clonality:	Polyclonal
Immunogen:	The immunogen for anti-ALG11 antibody: synthetic peptide directed towards the C terminal of human ALG11. Synthetic peptide located within the following region: LHTMWNEHFHFGIGVVECMAAGTILAHNSGGPKLDIVIPHEGDITGFLAES
Formulation:	Liquid. Purified antibody supplied in 1x PBS buffer with 0.09% (w/v) sodium azide and 2% sucrose. <i>Note that this product is shipped as lyophilized powder to China customers.</i>
Purification:	Affinity Purified
Conjugation:	Unconjugated
Storage:	Store at -20°C as received.
Stability:	Stable for 12 months from date of receipt.
Predicted Protein Size:	56 kDa
Gene Name:	ALG11, alpha-1,2-mannosyltransferase
Database Link:	<a href="#">NP_001004127</a> <a href="#">Entrez Gene 440138 Human</a> <a href="#">Q2TAA5</a>
Background:	The function remains unknown.
Synonyms:	CDG1P; GT8
Note:	Immunogen Sequence Homology: Rat: 100%; Horse: 100%; Mouse: 100%; Pig: 93%; Human: 93%; Guinea pig: 93%; Yeast: 92%; Bovine: 92%; Zebrafish: 91%; Dog: 86%; Rabbit: 86%
Protein Families:	Transmembrane



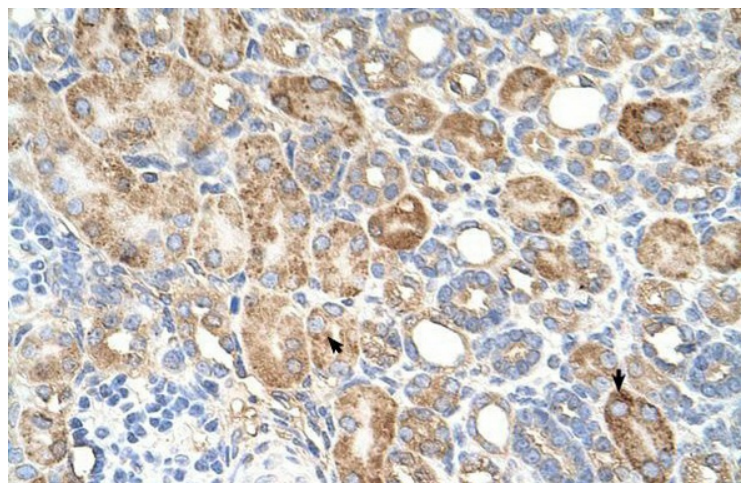
[View online »](#)

Protein Pathways: Metabolic pathways, N-Glycan biosynthesis

### Product images:



WB Suggested Anti-ALG11 Antibody Titration: 0.2-1 ug/ml; Positive Control: HepG2 cell lysate



Human kidney