

Product datasheet for **TA335310**

KLHL31 Rabbit Polyclonal Antibody

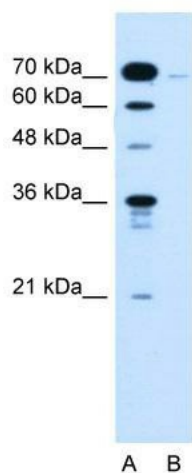
Product data:

Product Type:	Primary Antibodies
Applications:	IHC, WB
Recommended Dilution:	WB, IHC
Reactivity:	Human
Host:	Rabbit
Isotype:	IgG
Clonality:	Polyclonal
Immunogen:	The immunogen for anti-KLHL31 antibody: synthetic peptide directed towards the C terminal of human KLHL31. Synthetic peptide located within the following region: TPRGWHCAVTLSDRVYVMGGSQLGPRGERVDLTVECYSYPATGQWSYAAP
Formulation:	Liquid. Purified antibody supplied in 1x PBS buffer with 0.09% (w/v) sodium azide and 2% sucrose.
Purification:	Affinity Purified
Conjugation:	Unconjugated
Storage:	Store at -20°C as received.
Stability:	Stable for 12 months from date of receipt.
Predicted Protein Size:	70 kDa
Gene Name:	kelch like family member 31
Database Link:	NP_001003760 Entrez Gene 401265 Human Q9H511
Background:	The function remains unknown.
Synonyms:	bA345L23.2; BKLHD6; KBTBD1; KLHL
Note:	Immunogen Sequence Homology: Dog: 100%; Rat: 100%; Horse: 100%; Human: 100%; Mouse: 100%; Bovine: 100%; Pig: 93%; Rabbit: 93%; Zebrafish: 93%
Protein Families:	Transmembrane

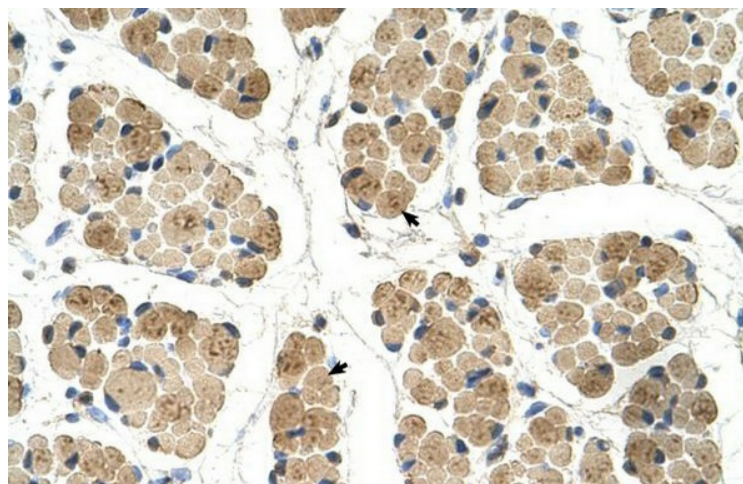


[View online »](#)

Product images:



WB Suggested Anti-KLHL31 Antibody Titration:
0.2-1 ug/ml; Positive Control: Jurkat cell lysate



Human Muscle